

Appendices

Appendix A. Products that are misbranded by use of the word “milk” in the name of the product.

Figure A-1. ALDI Foods Soymilk Products.	4
Figure A-2. Eden Foods Inc. Soymilk Products.	5
Figure A-3. Nature’s Promise [®] Soymilk Products.	7
Figure A-4. WestSoy [®] Soymilk Products.	8
Figure A-5. Soy Dream [®] Soymilk Products.	12
Figure A-6. Harris Teeter [®] Soymilk Products.	14
Figure A-7. Kikkoman Pearl [®] Soymilk Products.	15
Figure A-8. NOW [®] Foods Soymilk Products.	16
Figure A-9. Odwalla [®] Soymilk Products.	17
Figure A-10. Pacific [™] Natural Foods Soymilk Products.	18
Figure A-11. Pulmuone Wildwood [™] Soymilk Products.	19
Figure A-12. Pulmuone Wildwood [™] Soymilk Products.	20
Figure A-13. Roundy’s Soymilk Products.	21
Figure A-14. Safeway Soymilk Products.	22
Figure A-15. 8 th Continent [®] Soymilk Products.	23
Figure A-16. Archer Farms [®] Soymilk Products.	25
Figure A-17. Trader Joe’s [®] Soymilk Products.	26
Figure A-18. Vitasoy [®] Soymilk Products.	27
Figure A-19. Wegmans Food Markets Soymilk Products.	28
Figure A-20. Silk [®] Soymilk Products.	29
Figure A-21. Whole Foods [®] Market Soymilk Products.	32
Figure A-22. Wild Harvest [®] Soymilk Products.	33
Figure A-23. B.R.A.T. [™] Ricemilk Products.	34
Figure A-24. Don Jose Ricemilk Products.	35
Figure A-25. Nature’s Promise [®] Ricemilk Products.	36
Figure A-26. Good Karma Food Technologies Ricemilk Products.	37
Figure A-27. Harris Teeter [®] Ricemilk Products.	38

Figure A-28. Wild Harvest [®] Ricemilk Products.....	39
Figure A-29. Almond Breeze [®] Almond Milk Products.....	40
Figure A-30. Silk [®] Almond Milk Products.....	41
Figure A-31. Living Harvest [®] Hemp Milk Products.....	42
Figure A-32. Manitoba Harvest Hemp Milk Products.	43
Figure A-33. Pacific [™] Natural Foods [™] Hemp Milk Products.	44
Figure A-34. Cytosport [™] Products.....	45

Appendix B. Products that are mislabeled by use of the word “milk” in reference to a non-dairy ingredient in the ingredient statement, but not the product name.

Figure B-1. WestSoy [®] Beverages.....	49
Figure B-2. Soy Dream [®] Beverages.	50
Figure B-3. Odwalla [®] Beverages.	51
Figure B-4. Vitasoy [®] Beverages.....	52
Figure B-5. Silk [®] Soy Beverages.....	53
Figure B-6. Turtle Mountain Yogurt Analogs.	54
Figure B-7. Turtle Mountain Ice Cream Analogs.	56
Figure B-8. Good Karma Ice Cream Analogs.	57
Figure B-9. Living Harvest [®] Ice Cream Analogs.....	58

Appendix C. Products that are misbranded by use of standardized dairy products in the name of the dairy product analog.

Figure C-1. Alkemie Ice Cream Analogs.	59
Figure C-2. Temptation Ice Cream Analogs.....	61
Figure C-3. Double Rainbow Ice Cream Analogs.....	62
Figure C-4. Pulmuone Wildwood [™] Yogurt Analogs.	63
Figure C-5. Ricera [™] Foods Yogurt Analogs.....	64
Figure C-6. Stonyfield Farm Yogurt Analogs.	65
Figure C-7. Silk [®] Yogurt Analogs.....	66

Figure C-8. Dr. Cow Cheese Analogs.	67
Figure C-9. Eat In The Raw Cheese Analogs.	68
Figure C-10. Edward & Sons Cheese Analogs.....	69
Figure C-11. Follow Your Heart [®] Sour Cream Analog and Cream Cheese Analog.....	70
Figure C-12. Lisanatti [®] Foods Cheese Analogs.....	71
Figure C-13. Tofutti [®] Cheese Analogs.	72
Figure C-14. Amy's Kitchen Products Containing Misbranded Dairy Analogs.	73
Figure C-15. Elena's Food Specialties Products Containing Misbranded Dairy Analogs.	74
Figure C-16. Tofutti [®] Products Containing Misbranded Dairy Analogs.	75

Figure A-1. ALDI Foods Soymilk Products.

Products are misbranded by use of the word “milk” in the name of the product.

Figure A-1(a)



Figure A-1(b)



Figure A-1(c)



Figure A-1(a). Fit & Active[®] Original Organic Soymilk.

Figure A-1(b). Fit & Active[®] Chocolate Organic Soymilk.

Figure A-1(c). Fit & Active[®] Vanilla Organic Soymilk.

(Source: www.aldifoods.com, accessed March 2010.)

Figure A-2. Eden Foods Inc. Soymilk Products.

Products are misbranded by use of the word “milk” in the name of the product.

Figure A-2(a)

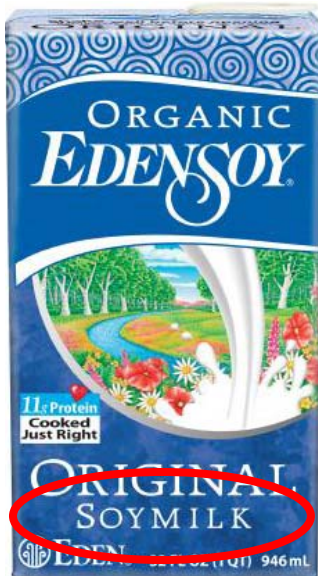


Figure A-2(b)

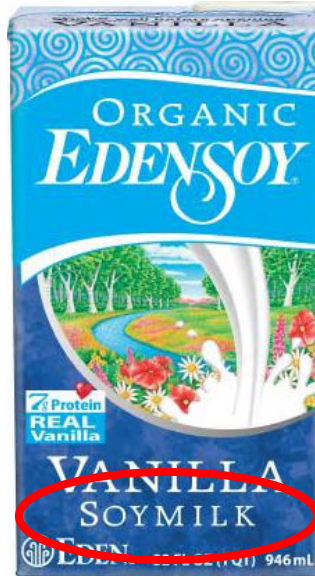


Figure A-2(c)

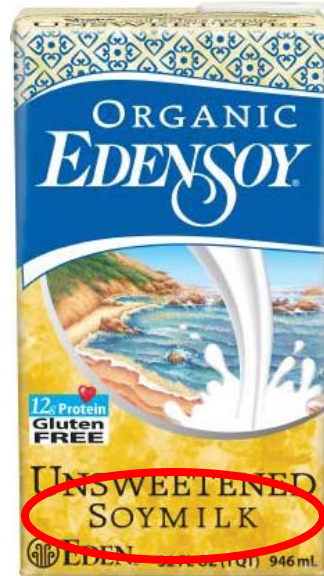


Figure A-2(d)

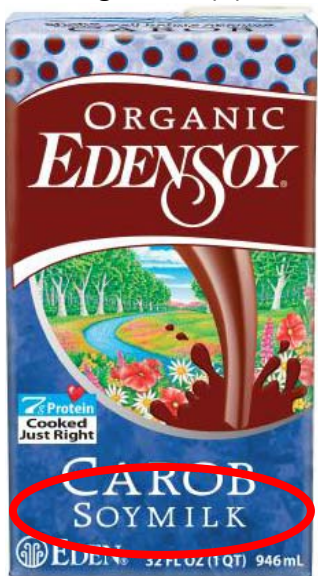


Figure A-2(e)

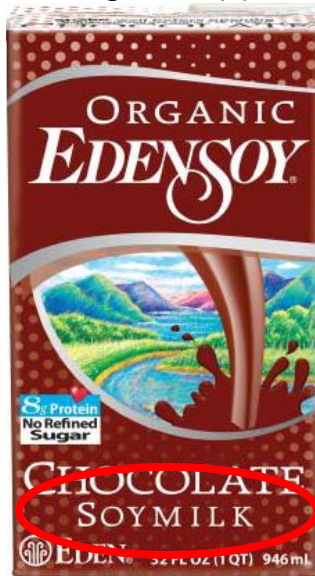


Figure A-2(f)



Figure A-2(a). Edensoy® Original Soymilk.

Figure A-2(b). Edensoy® Vanilla Soymilk.

Figure A-2(c). Edensoy® Unsweetened Soymilk.

Figure A-2(d). Edensoy® Carob Soymilk.

Figure A-2(e). Edensoy® Chocolate Soymilk.

Figure A-2(f). Edensoy® Extra Original Soymilk.

Figure A-2. Eden Foods Inc. Soymilk Products (continued).
 Products are misbranded by use of the word “milk” in the name of the product.

Figure A-2(g)

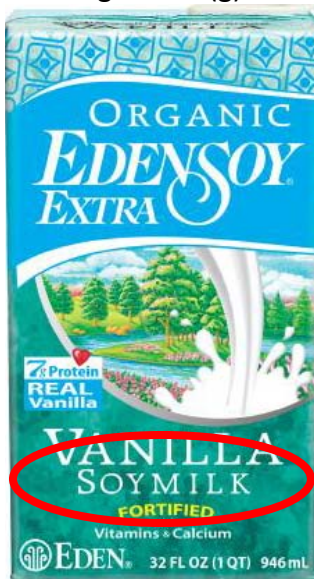


Figure A-2(h)

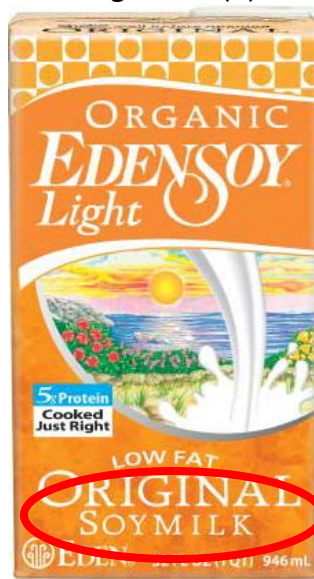


Figure A-2(i)

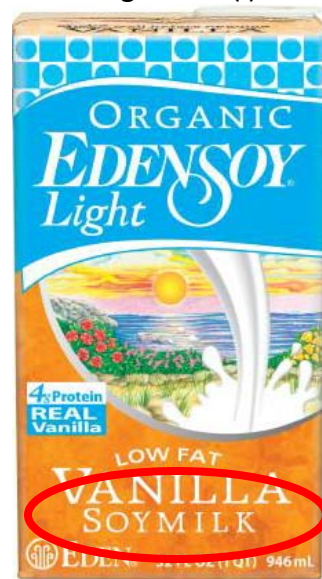


Figure A-2(g). Edensoy[®] Extra Vanilla Soymilk.

Figure A-2(h). Edensoy[®] Light Low Fat Original Soymilk.

Figure A-2(i). Edensoy[®] Light Low Fat Vanilla Soymilk.

(Source: www.edenfoods.com, accessed March 2010.)

Figure A-3. Nature's Promise[®] Soymilk Products.

Products are misbranded by use of the word "milk" in the name of the product.

Figure A-3(a)



Figure A-3(b)



Figure A-3(a). Nature's Promise[®] Organic Vanilla Soymilk (shelf-stable).

Figure A-3(b). Nature's Promise[®] Organic Vanilla Soymilk (refrigerated).

(Source: Product photos, Giant Foods, Alexandria, VA, March 2010.)

Figure A-4. WestSoy[®] Soymilk Products.

Products are misbranded by use of the word “milk” in the name of the product, and mislabeled by use of the word “soymilk” in the ingredient statement.

Figure A-4(a)



Figure A-4(b)

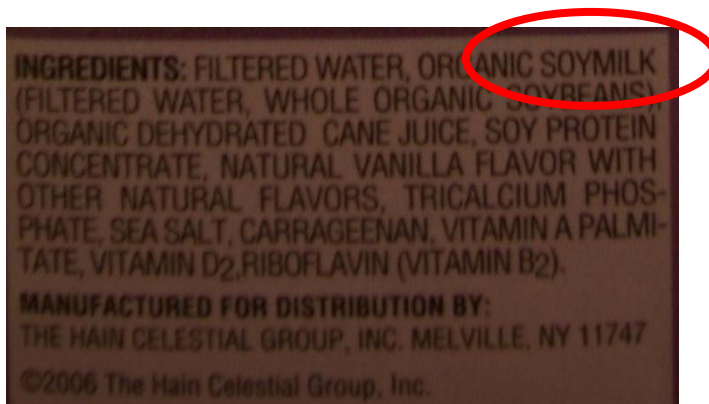


Figure A-4(c)



Figure A-4(d)

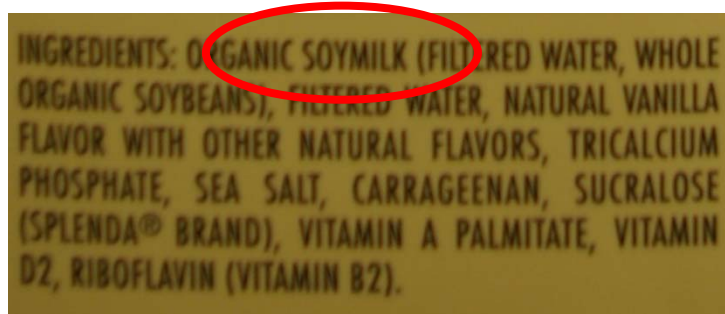


Figure A-4(a). West Soy[®] Non Fat Vanilla Soymilk Principal Display Panel.

Figure A-4(b). West Soy[®] Non Fat Vanilla Soymilk Ingredient Information.

Figure A-4(c). WestSoy[®] Soy Slender[™] Vanilla Soymilk Principal Display Panel.

Figure A-4(d). WestSoy[®] Soy Slender[™] Vanilla Soymilk Ingredient Information.

Figure A-4. WestSoy[®] Soymilk Products (continued).

Products are misbranded by use of the word “milk” in the name of the product, and mislabeled by use of the word “soymilk” in the ingredient statement.

Figure A-4(e)



Figure A-4(f)



Figure A-4(g)



Figure A-4(h)



Figure A-4(i)



Figure A-4(j)



Figure A-4(e). WestSoy[®] Plus Plain Soymilk.

Figure A-4(f). WestSoy[®] Plus Vanilla Soymilk.

Figure A-4(g). WestSoy[®] Low Fat Plain Soymilk Drink.

Figure A-4(h). WestSoy[®] Low Fat Vanilla Soymilk Drink.

Figure A-4(i). WestSoy[®] Lite Plain Soymilk Drink.

Figure A-4(j). WestSoy[®] Lite Vanilla Soymilk Drink.

Figure A-4. WestSoy[®] Soymilk Products (continued).
 Products are misbranded by use of the word “milk” in the name of the product, and mislabeled by use of the word “soymilk” in the ingredient statement.

Figure A-4(k)



Figure A-4(l)



Figure A-4(m)



Figure A-4(n)



Figure A-4(o)



Figure A-4(p)

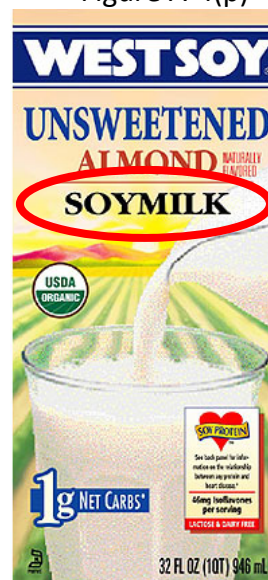


Figure A-4(k). WestSoy[®] Non Fat Plain Soymilk.

Figure A-4(l). WestSoy[®] Organic Original Soymilk.

Figure A-4(m). WestSoy[®] Organic Unsweetened Original Soymilk.

Figure A-4(n). WestSoy[®] Organic Unsweetened Chocolate Soymilk.

Figure A-4(o). WestSoy[®] Organic Unsweetened Vanilla Soymilk.

Figure A-4(p). WestSoy[®] Organic Unsweetened Almond Soymilk.

Figure A-4. WestSoy® Soymilk Products (continued).
Products are misbranded by use of the word “milk” in the name of the product, and mislabeled by use of the word “soymilk” in the ingredient statement.

Figure A-4(q)



Figure A-4(r)

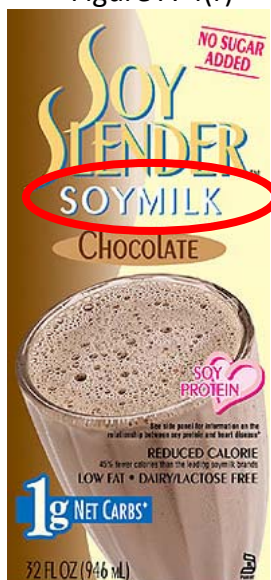


Figure A-4(s)



Figure A-4(t)



Figure A-4(u)



Figure A-4(q). WestSoy® Soy Slender™ Plain Soymilk.

Figure A-4(r). WestSoy® Soy Slender™ Chocolate Soymilk.

Figure A-4(s). WestSoy® Soy Slender™ Cappuccino Soymilk.

Figure A-4(t). WestSoy® Longevity™ Plain Soymilk Vitality Blend.

Figure A-4(u). WestSoy® Longevity™ Vanilla Soymilk Vitality Blend.

(Source: Figures A-4a, A-4b, A-4c, A-4d: Product photos, Giant Foods, Alexandria, VA, March 2010. All other figures from www.westsoy.biz, accessed March 2010.)

Figure A-5. Soy Dream[®] Soymilk Products.

Products are misbranded by use of the word “milk” in the name of the product, and mislabeled by use of the word “soymilk” in the ingredient statement.

Figure A-5(a)



Figure A-5(b)

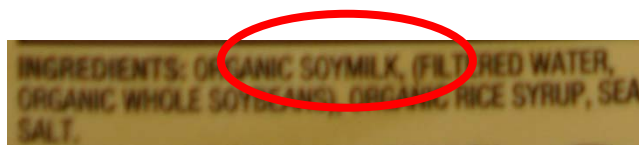


Figure A-5(c)



Figure A-5(d)



Figure A-5(e)



Figure A-5(a). Soy Dream[®] Classic Original Soymilk (refrigerated) Principal Display Panel.

Figure A-5(b). Soy Dream[®] Classic Original Soymilk (refrigerated) Ingredient Information.

Figure A-5(c). Soy Dream[®] Enriched Original Soymilk (refrigerated).

Figure A-5(d). Soy Dream[®] Enriched Vanilla Soymilk (refrigerated).

Figure A-5(e). Soy Dream[®] Classic Vanilla Soymilk (shelf-stable).

Figure A-5. Soy Dream[®] Soymilk Products (continued).

Products are misbranded by use of the word “milk” in the name of the product, and mislabeled by use of the word “soymilk” in the ingredient statement.



Figure A-5(g). Soy Dream[®] Enriched Chocolate Soymilk (shelf-stable).

Figure A-5(h). Soy Dream[®] Enriched Original Soymilk (shelf-stable).

Figure A-5(i). Soy Dream[®] Enriched Vanilla Soymilk (shelf-stable).

(Source: Figures A-5a, A-5b: Product photos, Giant Foods, Alexandria, VA, March 2010. All other figures from www.tastethedream.com, accessed March 2010.)

Figure A-6. Harris Teeter® Soymilk Products.

Products are misbranded by use of the word “milk” in the name of the product.

Figure A-6(a)



Figure A-6(b)



Figure A-6(a). Harris Teeter® Organic Original Soymilk.

Figure A-6(b). Harris Teeter® Organic Vanilla Soymilk.

(Source: Product photos, Harris Teeter®, Alexandria, VA, March 2010.)

Figure A-7. Kikkoman Pearl[®] Soymilk Products.

Products are misbranded by use of the word “milk” in the name of the product.

Figure A-7(a)



Figure A-7(b)



Figure A-7(c)



Figure A-7(d)



Figure A-7(e)



Figure A-7(f)



Figure A-7(a). Pearl[®] Original Soymilk.

Figure A-7(b). Pearl[®] Unsweetened Soymilk.

Figure A-7(c). Pearl[®] Creamy Vanilla Soymilk.

Figure A-7(d). Pearl[®] Chocolate Soymilk.

Figure A-7(e). Pearl[®] Green Tea Soymilk.

Figure A-7(f). Pearl[®] Coffee Soymilk.

(Source: www.pearlsoymilk.com, accessed March 2010.)

Figure A-8. NOW[®] Foods Soymilk Products.

Products are misbranded by use of the word “milk” in the name of the product.

Figure A-8(a)



Figure A-8(a). NOW[®] Foods Soy Milk Powder.

(Source: www.amazon.com, accessed March 2010.)

Figure A-9. Odwalla® Soymilk Products.

Products are misbranded by use of the word “milk” in the name of the product, and mislabeled by use of the word “soymilk” in the ingredient statement.

Figure A-9(a)



Figure A-9(b)



INGREDIENTS:

ORGANIC SOYMILK (WATER AND ORGANIC SOYBEANS),
WATER, ORGANIC EVAPORATED CANE JUICE, PUMPKIN PURÉE,
BANANA PURÉE, LESS THAN 2% OF: ISOLATED SOY PROTEIN,
VANILLA EXTRACT, NATURAL FLAVORS, TRICALCIUM
PHOSPHATE, SEA SALT, BETA CAROTENE, ZINC GLUCONATE,
VITAMIN B6 (PYRIDOXINE HYDROCHLORIDE) AND VITAMIN B12

Figure A-9(a). Super Protein® Pumpkin Soymilk Protein Drink.

Figure A-9(b). Super Protein® Vanilla Al'mondo® Soymilk Protein Drink.

Figure A-9(c). Super Protein® Pumpkin Soymilk Protein Drink Ingredient Information.

(Source: www.odwalla.com, accessed March 2010.)

Figure A-10. PacificTM Natural Foods Soymilk Products.

Products are misbranded by use of the word “milk” in the name of the product.



Figure A-10 (a). PacificTM Natural Foods Enriched Plain Soymilk.

Figure A-10 (b). PacificTM Natural Foods Enriched Chocolate Soymilk.

Figure A-10 (c). PacificTM Natural Enriched Vanilla Soymilk.

(Source: www.amazon.com, accessed March 2010.)

Figure A-11. Pulmuone Wildwood™ Soymilk Products.

Products are misbranded by use of the word “milk” in the name of the product.

Figure A-11(a)



Figure A-11(b)



Figure A-11(c)



Figure A-11(a). Wildwood™ Plain Soymilk.

Figure A-11(b). Wildwood™ Unsweetened Soymilk.

Figure A-11(c). Wildwood™ Vanilla Soymilk.

(Source: www.pulmuonewildwood.com, accessed March 2010.)

Figure A-12. Pulmuone Wildwood™ Soymilk Products.

Products are misbranded by use of the word “milk” in the name of the product, and mislabeled by use of the word “soymilk” in the ingredient statement.



Figure A-11(e)

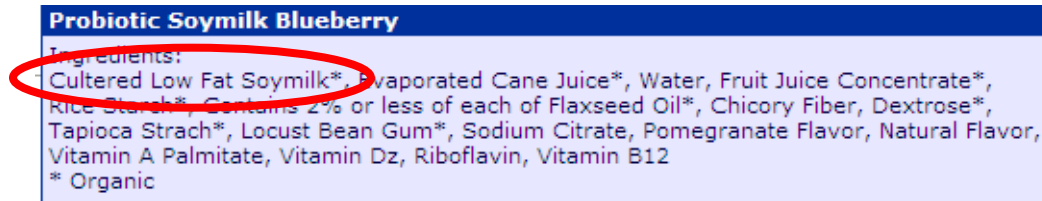


Figure A-12(a). Wildwood™ Probiotic Pomegranate Soymilk.

Figure A-12(b). Wildwood™ Probiotic Blueberry Soymilk.

Figure A-12(c). Wildwood™ Probiotic Vanilla Soymilk.

Figure A-12(d). Wildwood™ Plain Soymilk Creamer.

Figure A-12(e). Wildwood™ Probiotic Blueberry Ingredient Information.

(Source: www.pulmuonewildwood.com, accessed March 2010.)

Figure A-13. Roundy's Soymilk Products.

Products are misbranded by use of the word “milk” in the name of the product.

Figure A-13(a)

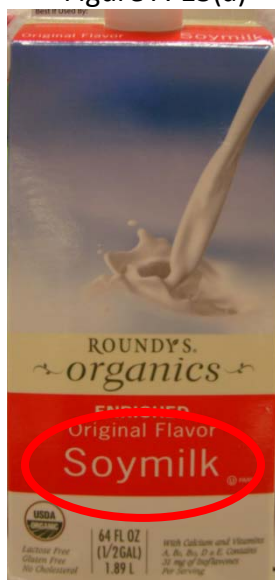


Figure A-13(b)

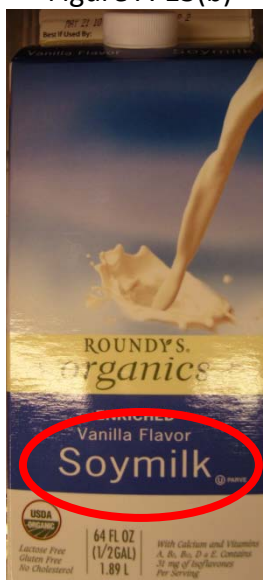


Figure A-13(c)

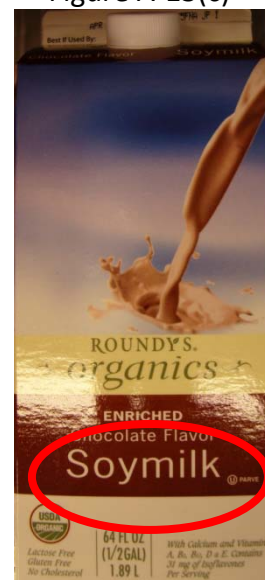


Figure A-13(a). Original Soymilk.

Figure A-13(b). Vanilla Soymilk.

Figure A-13(c). Chocolate Soymilk.

(Source: Product photos, Copps Food Centers, Madison, WI, March 2010.)

Figure A-14. Safeway Soymilk Products.

Products are misbranded by use of the word “milk” in the name of the product.

Figure A-14(a)

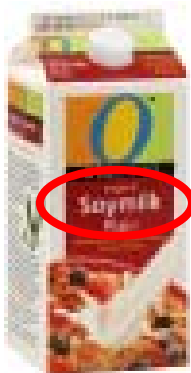


Figure A-14(b)



Figure A-14(c)



Figure A-14(d)



Figure A-14(e)



Figure A-14(a). OTM Organic Plain Soymilk.

Figure A-14(b). OTM Organic Vanilla Soymilk.

Figure A-14(c). OTM Organic Chocolate Soymilk.

Figure A-14(d). OTM Organic Plain Light Soymilk.

Figure A-14(e). OTM Organic Vanilla Light Soymilk.

(Source: www.safeway.com, accessed March 2010.)

Figure A-15. 8th Continent[®] Soymilk Products.

Products are misbranded by use of the word “milk” in the name of the product, and mislabeled by use of the word “soymilk” in the ingredient statement.

Figure A-15(a)



Figure A-15(b)

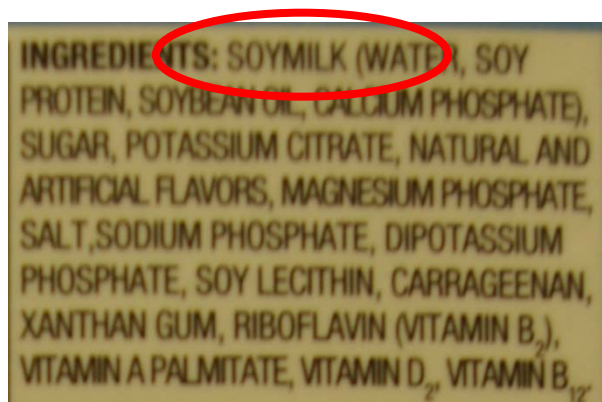


Figure A-15(c)



Figure A-15(d)



Figure A-15(e)



Figure A-15(a). 8th Continent[®] Original Soymilk.

Figure A-15(b). 8th Continent[®] Original Soymilk Ingredient Information.

Figure A-15(c). 8th Continent[®] Complete Soymilk.

Figure A-15(d). 8th Continent[®] Vanilla Soymilk.

Figure A-15(e). 8th Continent[®] Chocolate Soymilk.

Figure A-15. 8th Continent[®] Soymilk Products (continued).
Products are misbranded by use of the word “milk” in the name of the product, and mislabeled by use of the word “soymilk” in the ingredient statement.

Figure A-15(f)



Figure A-15(g)



Figure A-15(h)



Figure A-15(f)



Figure A-15(g)



Figure A-15(h)

Figure A-15(f). 8th Continent[®] Light Original Soymilk.
Figure A-15(g). 8th Continent[®] Light Vanilla Soymilk.
Figure A-15(h). 8th Continent[®] Light Chocolate Soymilk.
Figure A-15(i). 8th Continent[®] Fat Free Original Soymilk.
Figure A-15(j). 8th Continent[®] Fat Free Vanilla Soymilk.

(Source: Figures A-15a and A-15b: Product photos, Giant Foods, Alexandria, VA, March 2010. All other images from www.8thcontinent.com, accessed March 2010.)

Figure A-16. Archer Farms® Soymilk Products.

Products are misbranded by use of the word “milk” in the name of the product.

Figure A-16(a)



Figure A-16(a). Plain Soymilk.

(Source: Product photo, Target, Alexandria, VA, March 2010.)

Figure A-17. Trader Joe's[®] Soymilk Products.

Products are misbranded by use of the word “milk” in the name of the product.

Figure A-17(a)



Figure A-17(b)



Figure A-17(c)



Figure A-17(a). Original Soymilk.

Figure A-17(b). Unsweetened Soymilk.

Figure A-17(c). Vanilla Soymilk.

(Source: Product photos, Trader Joe's[®], Madison, WI, March 2010.)

Figure A-18. Vitasoy[®] Soymilk Products.

Products are misbranded by use of the word “milk” in the name of the product.

Figure A-18(a)



Figure A-18(b)



Figure A-18(c)



Figure A-18(d)



Figure A-18(a). Vitasoy[®] Original Soymilk.

Figure A-18(b). Vitasoy[®] Vanilla Soymilk.

Figure A-18(c). Vitasoy[®] Chocolate Soymilk.

Figure A-18(d). Vitasoy[®] Unsweetened Soymilk.

(Source: www.amazon.com, accessed March 2010.)

Figure A-19. Wegmans Food Markets Soymilk Products.

Products are misbranded by use of the word “milk” in the name of the product.

Figure A-19(a)



Figure A-19(b)



Figure A-19(c)



Figure A-19(d)



Figure A-19(e)



Figure A-19(a). Vanilla Soymilk.

Figure A-19(b). Original Soymilk.

Figure A-19(c). Reduced Fat Vanilla Soymilk.

Figure A-19(d). Chocolate Soymilk.

Figure A-19(e). Reduced Fat Original Soymilk.

(Source: www.wegmans.com, accessed March 2010.)

Figure A-20. Silk[®] Soymilk Products.

Products are misbranded by use of the word “milk” in the name of the product, and mislabeled by use of the word “soymilk” in the ingredient statement.

Figure A-20(a)



Figure A-20(b)

INGREDIENTS: All Natural Soymilk (Filtered Water, Whole Soybeans), All Natural Evaporated Cane Juice, Calcium Carbonate, Natural Vanilla Flavor, Sea Salt, Carrageenan, Vitamin A Palmitate, Vitamin D₂, Riboflavin (B₂), Vitamin B₁₂.

Figure A-20(c)



Figure A-20(d)

INGREDIENTS: All Natural Soymilk (Filtered Water, Whole Soybeans), Calcium Carbonate, Sea Salt, Natural Flavors, Carrageenan, Zinc Gluconate, Vitamin A Palmitate, Vitamin D₂, Riboflavin (B₂), Vitamin B₁₂.

Figure A-20(a). Vanilla Soymilk (refrigerated).

Figure A-20(b). Vanilla Soymilk (refrigerated) Ingredient Information.

Figure A-20(c). Unsweetened Soymilk (shelf-stable).

Figure A-20(d). Unsweetened Soymilk (shelf-stable) Ingredient Information.

Figure A-20. Silk® Soymilk Products (continued).

Products are misbranded by use of the word “milk” in the name of the product, and mislabeled by use of the word “soymilk” in the ingredient statement.

Figure A-20(e)



Figure A-20(f)



Figure A-20(g)



Figure A-20(h)



Figure A-20(i)



Figure A-20(j)



Figure A-20(e). Original Soymilk (refrigerated).

Figure A-20(f). Vanilla Soymilk (shelf-stable).

Figure A-20(g). Chocolate Soymilk (refrigerated).

Figure A-20(h). Unsweetened Soymilk (refrigerated).

Figure A-20(i). Very Vanilla Soymilk (refrigerated).

Figure A-20(j). Single Serve Very Vanilla Soymilk (shelf-stable).

Figure A-20. Silk® Soymilk Products (continued).

Products are misbranded by use of the word “milk” in the name of the product, and mislabeled by use of the word “soymilk” in the ingredient statement.

Figure A-20(k)



Figure A-20(l)



Figure A-20(m)



Figure A-20(k). Single Serve Original Soymilk (shelf-stable).

Figure A-20(l). Soymilk Nog.

Figure A-20(m). Soymilk Pumpkin Spice.

(Source: Figures A-20a through A-20d: Product photos, Giant Foods, Alexandria, VA, March 2010. Figure A-20e: Product photo, Copps Food Centers, Madison, WI, March 2010. Figures A-20f, A-20j, A-20k from www.amazon.com, accessed March 2010. Figure A-20g from www.peapod.com, accessed March 2010. Figures A-20h, A-20i, A-20l, and A-20m from www.silksoymilk.com, accessed March 2010.)

Figure A-21. Whole Foods[®] Market Soymilk Products.

Products are misbranded by use of the word “milk” in the name of the product.

Figure A-21(a)



Figure A-21(a). 365 Everyday Value[™] Organic Original Soymilk.

(Source: Product photo, Whole Foods[®] Market, Alexandria, VA, March 2010.)

Figure A-22. Wild Harvest[®] Soymilk Products.

Products are misbranded by use of the word “milk” in the name of the product.

Figure A-22(a)



Figure A-22(b)



Figure A-22(c)



Figure A-22(d)



Figure A-22(a). Chocolate Soymilk.

Figure A-22(b). Original Soymilk.

Figure A-22(c). Plain Soymilk.

Figure A-22(d). Vanilla Soymilk.

(Source: www.wildharvestorganic.com, accessed March 2010.)

Figure A-23. B.R.A.T.™ Ricemilk Products.

Products are misbranded by use of the word “milk” in the name of the product.

Figure A-23(a)



Figure A-23(b)



Figure A-23(c)



Figure A-23(d)



Figure A-23(a). Chocolate Honey Ricemilk.

Figure A-23(b). Original Ricemilk.

Figure A-23(c). Vanilla Ricemilk.

Figure A-23(d). CinnaBanApple Ricemilk.

(Source: www.amazon.com, accessed March 2010.)

Figure A-24. Don Jose Ricemilk Products.

Products are misbranded by use of the word “milk” in the name of the product.

Figure A-24(a)



Figure A-24(a). Cereal Match[®] Non-Dairy Rice Milk.

(Source: www.donjosefoods.com, accessed March 2010.)

Figure A-25. Nature's Promise[®] Ricemilk Products.

Products are misbranded by use of the word "milk" in the name of the product.

Figure A-25(a)



Figure A-25(a). Nature's Promise[®] Organic Vanilla Enriched Ricemilk (shelf-stable).

(Source: Product photo, Giant Foods, Alexandria, VA, March 2010.)

Figure A-26. Good Karma Food Technologies Ricemilk Products.

Products are misbranded by use of the word “milk” in the name of the product.

Figure A-26(a)



Figure A-26(b)



Figure A-26(c)



Figure A-26(a). Organic Whole Grain[®] Original Ricemilk.

Figure A-26(b). Organic Whole Grain[®] Vanilla Ricemilk.

Figure A-26(c). Organic Whole Grain[®] Chocolate Ricemilk.

(Source: www.goodkarmafoods.com, accessed March 2010.)

Figure A-27. Harris Teeter[®] Ricemilk Products.

Products are misbranded by use of the word “milk” in the name of the product.

Figure A-27(a)



Figure A-27(a). Harris Teeter[®] Organic Vanilla Ricemilk.

(Source: Product photos, Harris Teeter[®], Alexandria, VA, March 2010.)

Figure A-28. Wild Harvest[®] Ricemilk Products.

Products are misbranded by use of the word “milk” in the name of the product.

Figure A-28(a)



Figure A-28(b)



Figure A-28(a). Original Ricemilk.

Figure A-28(b). Vanilla Ricemilk.

(Source: www.wildharvestorganic.com, accessed March 2010.)

Figure A-29. Almond Breeze[®] Almond Milk Products.

Products are misbranded by use of the word “milk” in the name of the product.

Figure A-29(a)



Figure A-29(b)



Figure A-29(a). Original Almondmilk.

Figure A-29(b). Vanilla Almondmilk.

(Source: Product photos, Harris Teeter[®], Alexandria, VA, March 2010.)

Figure A-30. Silk[®] Almond Milk Products.

Products are misbranded by use of the word “milk” in the name of the product.

Figure A-30(a)



Figure A-30(b)



Figure A-30(a). Original Almondmilk.

Figure A-30(b). Vanilla Almondmilk.

(Source: www.silkpurealmond.com, accessed March 2010.)

Figure A-31. Living Harvest[®] Hemp Milk Products.

Products are misbranded by use of the word “milk” in the name of the product.

Figure A-31(a)



Figure A-31(b)



Figure A-31(c)



Figure A-31(d)



Figure A-31(e)



Figure A-31(a). Tempt[™] Original Hemp Milk.

Figure A-31(b). Tempt[™] Vanilla Hemp Milk.

Figure A-31(c). Tempt[™] Chocolate Hemp Milk.

Figure A-31(d). Tempt[™] Unsweetened Original Hemp Milk.

Figure A-31(e). Tempt[™] Unsweetened Vanilla Hemp Milk.

(Source: www.worldpantry.com, accessed March 2010.)

Figure A-32. Manitoba Harvest Hemp Milk Products.

Products are misbranded by use of the word “milk” in the name of the product.

Figure A-32(a)



Figure A-32(b)



Figure A-32(c)



Figure A-32(d)



Figure A-32(a). Unsweetened Original Hemp Bliss[®] Hempmilk.

Figure A-32(b). Original Hemp Bliss[®] Hempmilk.

Figure A-32(c). Vanilla Hemp Bliss[®] Hempmilk.

Figure A-32(d). Chocolate Hemp Bliss[®] Hempmilk.

(Source: www.manitobaharvest.com, accessed March 2010.)

Figure A-33. PacificTM Natural FoodsTM Hemp Milk Products.

Products are misbranded by use of the word “milk” in the name of the product.

Figure A-33(a)



Figure A-33(b)



Figure A-33(a). Original Hemp Milk.

Figure A-33(b). Vanilla Hemp Milk.

(Source: www.pacificfoods.com, accessed March 2010.)

Figure A-34. Cytosport™ Products.

Products are misbranded by use of the word “milk” in the name of the product.

Figure A-34(a)



Figure A-34(b)



Figure A-34(c)



Figure A-34 (d)



Figure A-34(e)



Figure A-34(f)



Figure A-34(a). Muscle Milk® Chocolate Powder.

Figure A-34(b). Muscle Milk® Naturals Real Chocolate Powder.

Figure A-34(c). Muscle Milk® Ready-to-Drink Vanilla Crème Nutritional Shake.

Figure A-34(d). Muscle Milk® Ready-to-Drink Tetra Pak Chocolate Nutritional Shake.

Figure A-34(e). Muscle Milk® Light Chocolate Powder.

Figure A-34(f). Muscle Milk® Light Ready-to-Drink Vanilla Crème Nutrition Shake.

Figure A-34. Cytosport™ Products (continued).
Products are misbranded by use of the word “milk” in the name of the product.

Figure A-34(g)



Figure A-34(h)



Figure A-34(i)



Figure A-34(j)



Figure A-34(k)



Figure A-34(g). Muscle Milk® Chocolate Peanut Caramel Bar.
Figure A-34(h). Muscle Milk® Light 100 Calorie Ready-to-Drink Chocolate Shake.
Figure A-34(i). Muscle Milk® Light Chocolate Peanut Caramel Bar.
Figure A-34(j). Muscle Milk® 'n Oats Maple & Brown Sugar.
Figure A-34(k). Muscle Milk® Refuel Tropix Protein Power Shot.

Figure A-34. Cytosport™ Products (continued).
Products are misbranded by use of the word “milk” in the name of the product.

Figure A-34(l)

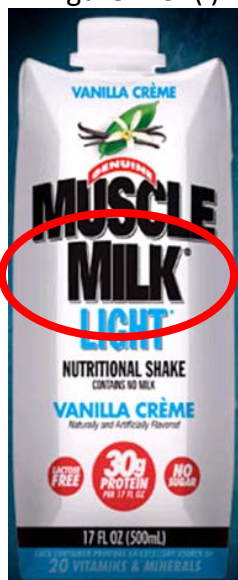


Figure A-34(m)



Figure A-34(n)



Figure A-34(o)



Figure A-34(p)



Figure A-34(l). Muscle Milk® Light Ready-to-Drink Vanilla Crème Nutritional Shake.
Figure A-34(m). Muscle Milk® Chocolate Powder Packets.
Figure A-34(n). Monster Milk™ Chocolate Milk Powder.
Figure A-34(o). Monster Milk™ Ready-to-Drink Chocolate Protein Shake.
Figure A-34(p). Collegiate Muscle Milk® Chocolate Milk Powder.

Figure A-34. Cytosport™ Products (continued).

Products are misbranded by use of the word “milk” in the name of the product.

Figure A-34(q)



Figure A-34(r)



Figure A-34(q). Collegiate Muscle Milk® Chocolate Milk Shake.

Figure A-34(r). Collegiate Muscle Milk® Chocolate Peanut Caramel Bar.

(Source: www.cytosport.com, accessed February 2010.)

Figure B-1. WestSoy® Beverages.

Products that are mislabeled by use of the word “milk” in reference to a non-dairy ingredient in the ingredient statement, but not the product name.

Figure B-1(a)

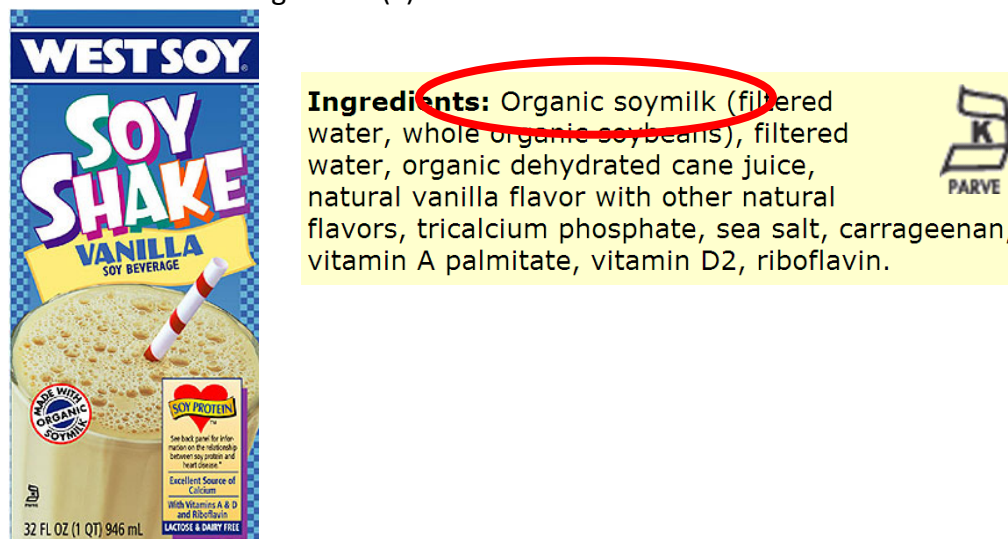


Figure B-1(b)

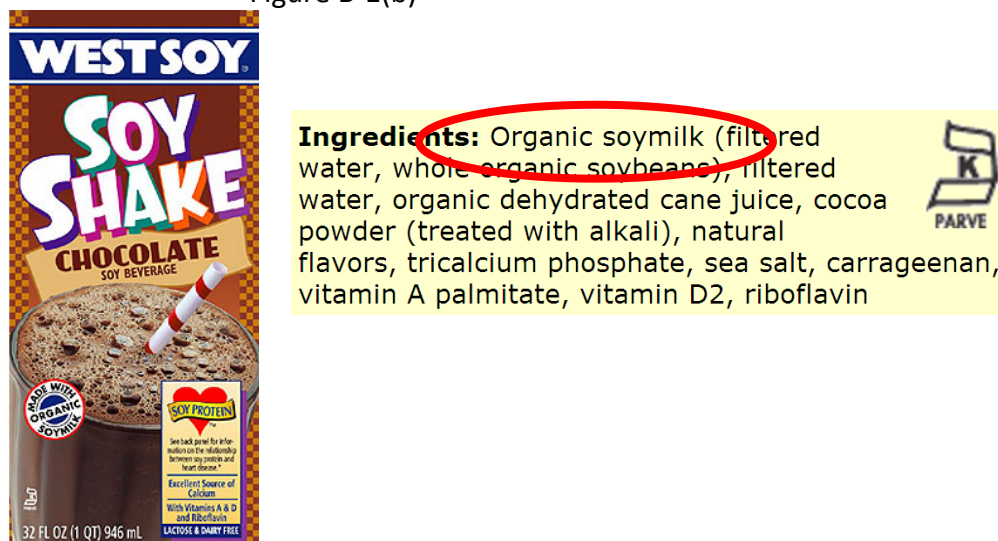


Figure B-1(a). WestSoy® Vanilla Soy Shakes Principal Display Panel and Ingredient Information.

Figure B-1(b). WestSoy® Chocolate Soy Shakes Principal Display Panel and Ingredient Information.

(Source: www.westsoy.biz, accessed March 2010.)

Figure B-2. Soy Dream[®] Beverages.

Products that are mislabeled by use of the word “milk” in reference to a non-dairy ingredient in the ingredient statement, but not the product name.

Figure B-2(a)



Ingredients: Filtered water, organic soymilk (filtered water, organic whole soybeans), organic evaporated cane juice, fruit juice from concentrate (apple, strawberry, blackberry, red raspberry), natural berry flavor with other natural flavors, tricalcium phosphate, pectin, citric acid, beet juice concentrate (for color), vitamin D2.

Figure B-2(b)



Ingredients: Filtered water, organic soymilk (filtered water, organic whole soybeans), organic evaporated cane juice, orange juice concentrate, natural flavors, tricalcium phosphate, pectin, citric acid, vitamin D2.

Figure B-2(a). Kidz Dream[®] Berry Blast Smoothie Principal Display Panel and Ingredient Information.

Figure B-2(b). Kidz Dream[®] Orange Cream Smoothie Principal Display Panel and Ingredient Information.

(Source: www.tastethedream.com, accessed March 2010.)

Figure B-3. Odwalla® Beverages.

Products that are mislabeled by use of the word “milk” in reference to a non-dairy ingredient in the ingredient statement, but not the product name.

Figure B-3(a)



INGREDIENTS:
 ORGANIC SOYMILK (WATER AND ORGANIC SOYBEANS),
 FILTERED WATER, ORGANIC EVAPORATED CANE JUICE, MILK
 PROTEIN CONCENTRATE, ISOLATED SOY PROTEIN, DUTCH
 COCOA (PROCESSED WITH ALKALI), TRICALCIUM PHOSPHATE,
 VANILLA EXTRACT, SEA SALT, ZINC GLUCONATE, VITAMIN B6
 (PYRIDOXINE HYDROCHLORIDE) AND VITAMIN B12
 (CYANOCOBALAMIN) CONTAINS SOY AND MILK PROTEIN

Figure B-3(b)



INGREDIENTS:
 ORGANIC SOYMILK (WATER AND ORGANIC SOYBEANS),
 FILTERED WATER, ORGANIC EVAPORATED CANE JUICE, MILK
 PROTEIN CONCENTRATE, ISOLATED SOY PROTEIN, VANILLA
 EXTRACT, TRICALCIUM PHOSPHATE, SEA SALT, ZINC
 GLUCONATE, VITAMIN B6 (PYRIDOXINE HYDROCHLORIDE)
 AND VITAMIN B12 (CYANOCOBALAMIN) CONTAINS SOY AND
 MILK PROTEIN.

Figure B-3(a). Chocolate Protein Monster™ Soy and Dairy Protein Shake Principal Display Panel and Ingredient Information.

Figure B-3(b). Vanilla Protein Monster™ Soy and Dairy Protein Shake Principal Display Panel and Ingredient Information.

(Source: www.odwalla.com, accessed March 2010.)

Figure B-4. Vitasoy® Beverages.

Products that are mislabeled by use of the word “milk” in reference to a non-dairy ingredient in the ingredient statement, but not the product name.

Figure B-4(a)



ORGANIC SOYMILK, FILTERED WATER, ORGANIC WHOLE SOYBEANS), ORGANIC CANE JUICE (DRIED), NATURAL FLAVORS, SALT, CARRAGEENAN, VEGETABLE JUICE FOR COLOR, ORGANIC CINNAMON, ORGANIC NUTMEG.

Figure B-4(b)



ORGANIC SOYMILK, FILTERED WATER, ORGANIC WHOLE SOYBEANS), ORGANIC CANE JUICE (DRIED), ORGANIC COCOA (PROCESSED WITH ALKALI), ORGANIC SOYBEAN OIL, NATURAL FLAVORS, CARRAGEENAN, SALT.

Figure B-4(a). Holly Nog Principal Display Panel and Ingredient Information.
Figure B-4(b). Peppermint Chocolate Principal Display Panel and Ingredient Information.

(Source: Product images from www.organicauthority.com, accessed March 2010. Ingredient information from www.vitasoy-usa.com, accessed March 2010.)

Figure B-5. Silk® Soy Beverages.

Products that are mislabeled by use of the word “milk” in reference to a non-dairy ingredient in the ingredient statement, but not the product name.

Figure B-5(a)

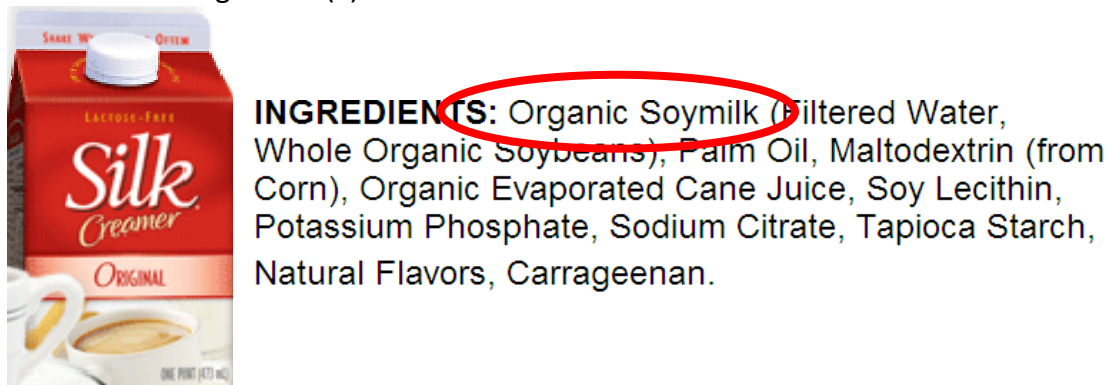


Figure B-5(a). Original Creamer Principal Display Panel and Ingredient Information.

(Source: www.silksoymilk.com, accessed March 2010.)

Figure B-6. Turtle Mountain Yogurt Analogs.

Products that are mislabeled by use of the word “milk” in reference to a non-dairy ingredient in the ingredient statement, but not the product name.

Figure B-6(a)



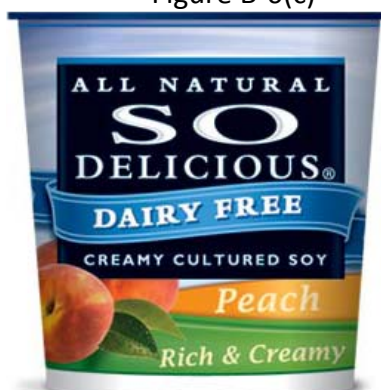
INGREDIENTS: ORGANIC SOYMILK (WATER, ORGANIC SOYBEANS), BLUEBERRIES, ORGANIC EVAPORATED CANE JUICE, CHICORY ROOT EXTRACT (INULIN), PECTIN, DEXTROSE, NATURAL FLAVORS, CALCIUM PHOSPHATE, MAGNESIUM PHOSPHATE, CAROB BEAN GUM, VEGETABLE AND FRUIT JUICE FOR COLOR, CITRIC ACID, SODIUM CITRATE, CALCIUM CHLORIDE, CARRAGEENAN, DIPOTASSIUM PHOSPHATE, LIVE CULTURES, VITAMIN B12.

Figure B-6(b)



INGREDIENTS: ORGANIC SOYMILK (WATER, ORGANIC SOYBEANS), ORGANIC EVAPORATED CANE JUICE, CHICORY ROOT EXTRACT (INULIN), PECTIN, DEXTROSE, NATURAL FLAVORS, CALCIUM PHOSPHATE, MAGNESIUM PHOSPHATE, CAROB BEAN GUM, SPICE, SODIUM CITRATE, CITRIC ACID, CARRAGEENAN, DIPOTASSIUM PHOSPHATE, LIVE CULTURES, VITAMIN B12.

Figure B-6(c)



INGREDIENTS: ORGANIC SOYMILK (WATER, ORGANIC SOYBEANS), PEACHES, ORGANIC EVAPORATED CANE JUICE, CHICORY ROOT EXTRACT (INULIN), PECTIN, DEXTROSE, NATURAL FLAVORS, CALCIUM PHOSPHATE, MAGNESIUM PHOSPHATE, CAROB BEAN GUM, VEGETABLE JUICE FOR COLOR, CITRIC ACID, CARRAGEENAN, DIPOTASSIUM PHOSPHATE, LIVE CULTURES, VITAMIN B12.

Figure B-6(a). So Delicious™ Dairy-Free® Blueberry Creamy Cultured Soy Principal Display Panel and Ingredient Information.

Figure B-6(b). So Delicious™ Dairy-Free® Cinnamon Bun Creamy Cultured Soy Principal Display Panel and Ingredient Information.

Figure B-6(c). So Delicious™ Dairy-Free® Peach Creamy Cultured Soy Principal Display Panel and Ingredient Information.

Figure B-6. Turtle Mountain Yogurt Analogs (continued).
 Products that are mislabeled by use of the word “milk” in reference to a non-dairy ingredient in the ingredient statement, but not the product name.

Figure B-6(d)



INGREDIENTS: ORGANIC SOYMILK (WATER, ORGANIC SOYBEANS), RASPBERRIES, ORGANIC EVAPORATED CANE JUICE, CHICORY ROOT EXTRACT (INULIN), PECTIN, DEXTROSE, NATURAL FLAVORS, CALCIUM PHOSPHATE, MAGNESIUM PHOSPHATE, CAROB BEAN GUM, VEGETABLE JUICE FOR COLOR, CITRIC ACID, SODIUM CITRATE, CALCIUM CHLORIDE, CARRAGEENAN, DIPOTASSIUM PHOSPHATE, LIVE CULTURES, VITAMIN B12.

Figure B-6(e)



INGREDIENTS: ORGANIC SOYMILK (WATER, ORGANIC SOYBEANS), ORGANIC EVAPORATED CANE JUICE, CHICORY ROOT EXTRACT (INULIN), PECTIN, DEXTROSE, NATURAL FLAVORS, CALCIUM PHOSPHATE, MAGNESIUM PHOSPHATE, CAROB BEAN GUM, CITRIC ACID, CARRAGEENAN, DIPOTASSIUM PHOSPHATE, LIVE CULTURES, VITAMIN B12.

Figure B-6(d). So Delicious™ Dairy-Free® Raspberry Creamy Cultured Soy Principal Display Panel and Ingredient Information.
 Figure B-6(e). So Delicious™ Dairy-Free® Vanilla Creamy Cultured Soy Principal Display Panel and Ingredient Information.

(Source: www.turtlemountain.com, accessed March 2010.)

Figure B-7. Turtle Mountain Ice Cream Analogs.

Products that are mislabeled by use of the word “milk” in reference to a non-dairy ingredient in the ingredient statement, but not the product name.

Figure B-7(a)



INGREDIENTS: NON-DAIRY FROZEN DESSERT, ORGANIC SOYMILK (FILTERED WATER, ORGANIC SOYBEANS), ORGANIC BROWN RICE SYRUP, ORGANIC DEHYDRATED CANE JUICE, ORGANIC SAFFLOWER OIL AND/OR ORGANIC SOYBEAN OIL, ORGANIC VANILLA, CAROB BEAN GUM, GUAR GUM, CARRAGEENAN], CHOCOLATE WAFERS (ORGANIC WHEAT FLOUR, ORGANIC DEHYDRATED CANE JUICE, ORGANIC CANOLA OIL, ORGANIC COCOA POWDER, ORGANIC CANE JUICE SYRUP, SEA SALT, BAKING SODA, SOY LECITHIN, ORGANIC CHOCOLATE LIQUOR, NATURAL FLAVOR).

Figure B-7(b)



NON-DAIRY FROZEN DESSERT: ORGANIC SOYMILK (FILTERED WATER, ORGANIC SOYBEANS), ORGANIC BROWN RICE SYRUP AND/OR ORGANIC TAPIOCA SYRUP, ORGANIC DEHYDRATED CANE JUICE, ORGANIC SOYBEAN OIL AND/OR ORGANIC SAFFLOWER OIL, CHICORY ROOT EXTRACT, NATURAL FLAVORS, CAROB BEAN GUM, NON-GMO POTATO SUGAR, GUAR GUM, CARRAGEENAN, SEA SALT], ORGANIC PECANS.

Figure B-7(a). So Delicious™ Dairy-Free® Butter Pecan Principal Display Panel and Ingredient Information.

Figure B-7(b). So Delicious™ Big Buddy Novelty Principal Display Panel and Ingredient Information.

(Source: www.turtlemountain.com, accessed March 2010. For dozens of other mislabeled products, see the website for the complete “So Delicious™”, “Purely Decadent®”, and “It’s Soy Delicious™” product lines.)

Figure B-8. Good Karma Ice Cream Analogs.

Products that are mislabeled by use of the word “milk” in reference to a non-dairy ingredient in the ingredient statement, but not the product name.

Figure B-8(a)



Ingredients: Organic Rice Milk (Filtered Water, Organic Rice Syrup Solids, Organic Whole Grain Brown Rice), Organic Dehydrated Cane Juice, Organic Sunflower Oil and/or Organic Canola Oil and/or Organic Safflower Oil, Chicory Root Extract, Organic Vanilla Flavor, Organic Tapioca Starch, Organic Locust Bean Gum, Organic Guar Gum, Carrageenan and/or Xanthan Gum, Soy Lecithin, Natural Flavor, Sea Salt.

Figure B-8(b)



Ingredients: Organic Rice Milk (Filtered Water, Organic Rice Syrup Solids, Organic Whole Grain Brown Rice), Organic Dehydrated Cane Juice, Organic Black Cherry Juice (Organic Cherry Juice Concentrate, Organic Apple Juice Concentrate, Organic Pear Juice Concentrate), Organic Sunflower Oil and/or Organic Canola Oil and/or Organic Safflower Oil, Organic Cherry Chunks (Organic Dark Cherries, Organic Evaporated Cane Juice, Filtered Water, Organic Rice Starch, Citric Acid, Natural Flavor, Red Beet Concentrate), Organic Chicory Root Extract, Natural Black Cherry Flavor, Organic Tapioca Starch, Organic Locust Bean Gum, Organic Soy Protein Isolate, Organic Guar Gum, Carrageenan, Xanthan Gum, Soy Lecithin, Natural Flavor, Citric Acid, Sea Salt.

Figure B-8(a). Rice Divine™ Very Vanilla Principal Display Panel and Ingredient Information.

Figure B-8(b). Rice Divine™ Very Cherry Principal Display Panel and Ingredient Information.

(Source: www.goodkarmafoods.com, accessed March 2010. For other mislabeled products, see the website for the complete product line.)

Figure B-9. Living Harvest[®] Ice Cream Analogs.

Products that are mislabeled by use of the word “milk” in reference to a non-dairy ingredient in the ingredient statement, but not the product name.

Figure B-9(a)

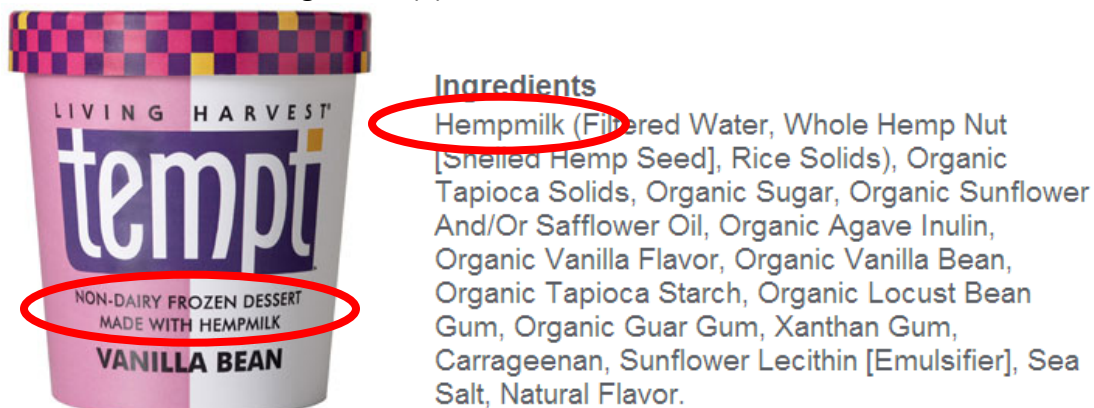


Figure B-9(b)

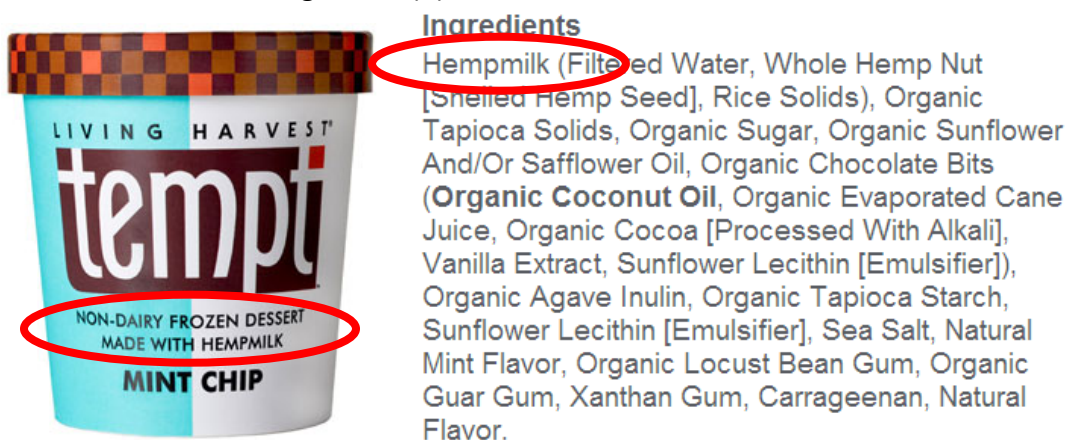


Figure B-9(a). Tempt[™] Vanilla Bean Non-Dairy Frozen Dessert Principal Display Panel and Ingredient Information.

Figure B-9(b). Tempt[™] Mint Chip Principal Display Panel and Ingredient Information.

(Source: www.livingharvest.com, accessed March 2010. For other mislabeled products, see the website for the complete product line.)

Figure C-1. Alkemie Ice Cream Analogs.

Products are misbranded by use of standardized dairy foods in the name of the dairy product analog, and are mislabeled by use of the word “milk” in reference to a non-dairy ingredient in the ingredient statement.

Figure C-1(a)



Ingredients: Cashew Milk (Organic Cashews, Filtered Water), Coconut Cream*, Organic Agave Nectar, Organic Vanilla, Vanilla Beans, Sea Salt, Organic Guar Gum

Figure C-1(b)



Ingredients: Cashew Milk (Organic Cashews, Filtered Water), Coconut Cream*, Organic Agave Nectar, Organic Cacao Powder, Organic Vanilla, Sea Salt, Organic Guar Gum

Figure C-1. Alkemie Ice Cream Analogs (continued).

Products are misbranded by use of standardized dairy foods in the name of the dairy product analog, and are mislabeled by use of the word “milk” in reference to a non-dairy ingredient in the ingredient statement.

Figure C-1(c)



Ingredients: Cashew Milk (Organic Cashews, Filtered Water), Coconut Cream*, Organic Agave Nectar, Organic Chocolate Chips (Sugar, Coconut Oil, Cocoa, Soy Lecithin, Vanilla), Natural Mint Extract, Sea Salt, Organic Guar Gum

Figure C-1(a). Vanilla Bean Dairy-Free Ice Cream Principal Display Panel and Ingredient Information.

Figure C-1(b). Dark Chocolate Dairy-Free Ice Cream Principal Display Panel and Ingredient Information.

Figure C-1(c). Mint Chocolate Chip Dairy-Free Ice Cream Principal Display Panel and Ingredient Information.

(Source: www.alkemieicecream.com, accessed March 2010.)

Figure C-2. Temptation Ice Cream Analogs.

Products are misbranded by use of standardized dairy foods in the name of the dairy product analog.

Figure C-2(a)



Figure C-2(a). Temptation Chocolate and Vanilla Home Vegan Ice Cream Mix.

(Source: www.veganessentials.com, accessed March 2010. For other misbranded and mislabeled products, see www.chicagosoydairy.com for the complete product line.)

Figure C-3. Double Rainbow Ice Cream Analogs.

Products are misbranded by use of standardized dairy foods in the name of the dairy product analog, and are mislabeled by use of the word “milk” in reference to a non-dairy ingredient in the ingredient statement.

Figure C-3(a)



Ingredients: ORGANIC SOY MILK (FILTERED WATER, ORGANIC SOYBEANS), ORGANIC CRYSTALLIZED CANE JUICE, ORGANIC OLEIC SAFFLOWER OIL, NON-GMO BROWN RICE SYRUP SOLIDS, NATURAL FLAVOR, SEA SALT, GUAR GUM, CAROB BEAN GUM, CARRAGEENAN, GROUND VANILLA BEANS.

Figure C-3(b)



Ingredients: ORGANIC SOY MILK (FILTERED WATER, ORGANIC SOYBEANS), ORGANIC CRYSTALLIZED CANE JUICE, ROASTED PECANS, ORGANIC OLEIC SAFFLOWER OIL, NON-GMO BROWN RICE SYRUP SOLIDS, NATURAL FLAVOR, SEA SALT, CAROB BEAN GUM, GUAR GUM, CARRAGEENAN.

Figure C-3(a). Vanilla Bean Soy Cream Principal Display Panel and Ingredient Information.

Figure C-3(b). Butter Pecan Soy Cream Principal Display Panel and Ingredient Information.

(Source: www.doublerainbow.com, accessed March 2010. For other misbranded and mislabeled products, see the website for the complete product line.)

Figure C-4. Pulmuone Wildwood™ Yogurt Analogs.

Products are misbranded by use of standardized dairy foods in the name of the dairy product analog, and are mislabeled by use of the word “milk” in reference to a non-dairy ingredient in the ingredient statement.

Figure C-4(a)

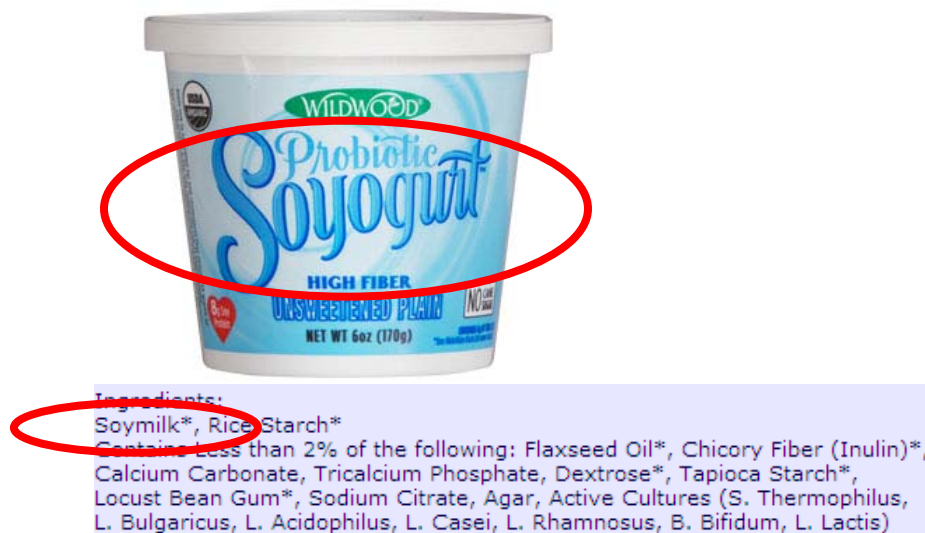


Figure C-4(b)

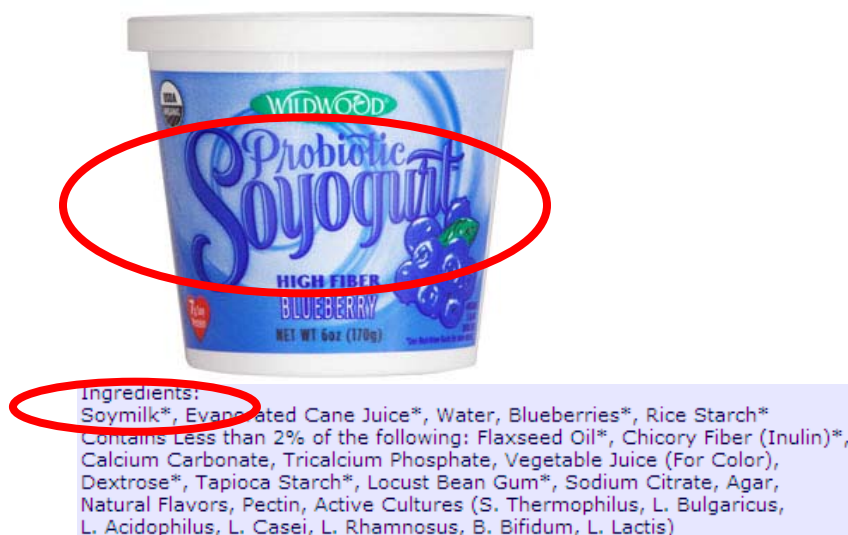


Figure C-4(a). Plain Unsweetened Soyogurt Principal Display Panel and Ingredient Information.

Figure C-4(b). Blueberry Soyogurt Principal Display Panel and Ingredient Information.

(Source: www.pulmuonewildwood.com, accessed March 2010. For other misbranded and mislabeled products, see the website for the complete product line.)

Figure C-5. Ricera™ Foods Yogurt Analogs.

Products are misbranded by use of standardized dairy foods in the name of the dairy product analog, and are mislabeled by use of the word “milk” in reference to a non-dairy ingredient in the ingredient statement.

Figure C-5(a)



Ricera Vanilla Yogurt Ingredients: Organic Ricemilk (water, organic whole-grain brown rice), Water, Evaporated Cane Juice, Pectin, Inulin, Natural Flavors, Calcium Phosphate, Locust Bean Gum, Citric Acid, Salt, Agar, Vitamin A Palmitate, Vitamin D2, Live and Active Cultures including *L. bulgaricus*, *S. thermophilus*, *L. acidophilus*, *B. bifidum*.

Figure C-5(b)



Ricera Peach Yogurt Ingredients: Organic Ricemilk (water, organic whole-grain brown rice), Evaporated Cane Juice, Peaches, Water, Pectin, Inulin, Calcium Phosphate, Locust Bean Gum, Natural Flavors, Salt, Citric Acid, Annatto, Agar, Vitamin A Palmitate, Vitamin D2, Live and Active Cultures including *L. bulgaricus*, *S. thermophilus*, *L. acidophilus*, *B. bifidum*.

Figure C-5(a). Vanilla Rice Yogurt Principal Display Panel and Ingredient Information.
Figure C-5(b). Peach Rice Yogurt Principal Display Panel and Ingredient Information.

(Source: www.ricerafoods.com, accessed March 2010. For other misbranded and mislabeled products, see the website for the complete product line.)

Figure C-6. Stonyfield Farm Yogurt Analogs.

Products are misbranded by use of standardized dairy foods in the name of the dairy product analog, and are mislabeled by use of the word “milk” in reference to a non-dairy ingredient in the ingredient statement.

Figure C-6(a)



Figure C-6(b)



Figure C-6(a). Vanilla Soy Yogurt Principal Display Panel and Ingredient Information.
Figure C-6(b). Blueberry Soy Yogurt Principal Display Panel and Ingredient Information.

(Source: www.stonyfield.com, accessed March 2010. For other misbranded and mislabeled products, see the website for the complete product line.)

Figure C-7. Silk® Yogurt Analogs.

Products are misbranded by use of standardized dairy foods in the name of the dairy product analog, and are mislabeled by use of the word “milk” in reference to a non-dairy ingredient in the ingredient statement.

Figure C-7(a)

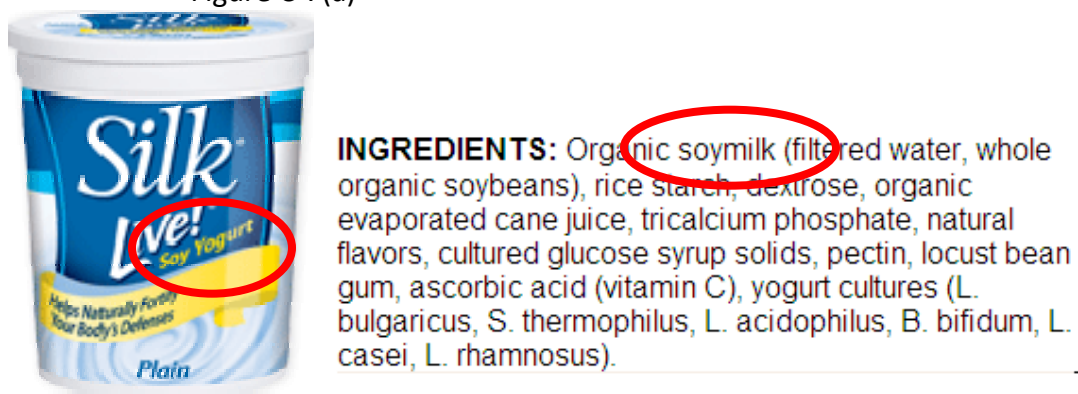


Figure C-7(a). Silk® Live!® Vanilla Soy Yogurt Principal Display Panel and Ingredient Information.

(Source: www.silksoymilk.com, accessed March 2010. For other misbranded and mislabeled products, see the website for the complete product line.)

Figure C-8. Dr. Cow Cheese Analogs.

Products are misbranded by use of standardized dairy foods in the name of the dairy product analog.

Figure C-8(a)



Figure C-8(a). Cashew Nut Cream Cheese.

(Source: www.dr-cow.com, accessed March 2010. For other misbranded products, see the website for the complete product line.)

Figure C-9. Eat In The Raw Cheese Analogs.

Products are misbranded by use of standardized dairy foods in the name of the dairy product analog.

Figure C-9(a)



Figure C-9(b)



Figure C-9(a). Parma Original Vegan Parmesan.

Figure C-9(b). Parma Cayenne Vegan Parmesan.

(Source: www.eatintheraw.com, accessed March 2010.)

Figure C-10. Edward & Sons Cheese Analogs.

Products are misbranded by using a name that does not sufficiently distinguish the non-dairy food from the standardized dairy product.



Figure C-10(a). Road's End Organics® Cheddar Style Shells & Chreese® Organic Pasta Dinner.

Figure C-10(b). Road's End Organics® Cheddar Style Mac & Chreese® Organic Pasta Dinner.

Figure C-10(c). Road's End Organics® Cheddar Chreese® Sauce Mix.

(Source: www.edwardandsons.com, accessed March 2010. For other misbranded products, see the website for the complete product line.)

Figure C-11. Follow Your Heart[®] Sour Cream Analog and Cream Cheese Analog.

Products are misbranded based on the prominence given to the dairy product name compared to the term that designates it as anything other than a real dairy product (i.e. “alternative”). These products should be labeled as “imitation” using a consistent font size.

Figure C-11(a)



Figure C-11(b)



Figure C-11(a). Vegan Gourmet[™] Sour Cream Alternative.

Figure C-11(b). Vegan Gourmet[™] Cream Cheese Alternative.

(Source: www.followyourheart.com, accessed March 2010. For other misbranded products, see the website for the complete product line.)

Figure C-12. Lisanatti® Foods Cheese Analogs.

Products are misbranded by using a name that does not sufficiently distinguish the non-dairy food from the standardized dairy product.

Figure C-12(a)



Figure C-12(b)



Figure C-12(a). Cheddar Style RiceCheeze®.

Figure C-12(b). Mozzarella Style RiceCheeze®.

(Source: www.lisanattifoods.com, accessed March 2010. For other misbranded products, see the website for the complete product line.)

Figure C-13. Tofutti® Cheese Analogs.

Products are misbranded by use of standardized dairy foods in the name of the dairy product analog.

Figure C-13(a)



Figure C-13(b)



Figure C-13(a). Mozzarella Cheese Flavor Soy-Cheese Slices.

Figure C-13(b). American Cheese Flavor Soy-Cheese Slices.

(Source: www.tofutti.com, accessed March 2010.)

Figure C-14. Amy's Kitchen Products Containing Misbranded Dairy Analogs.

Products are misbranded by using a name that does not sufficiently distinguish the non-dairy food from the standardized dairy product in the product name. Products are mislabeled by using a name that does not sufficiently distinguish the non-dairy food from the standardized dairy product in the ingredient statement.

Figure C-14(a)



Figure C-14(b)

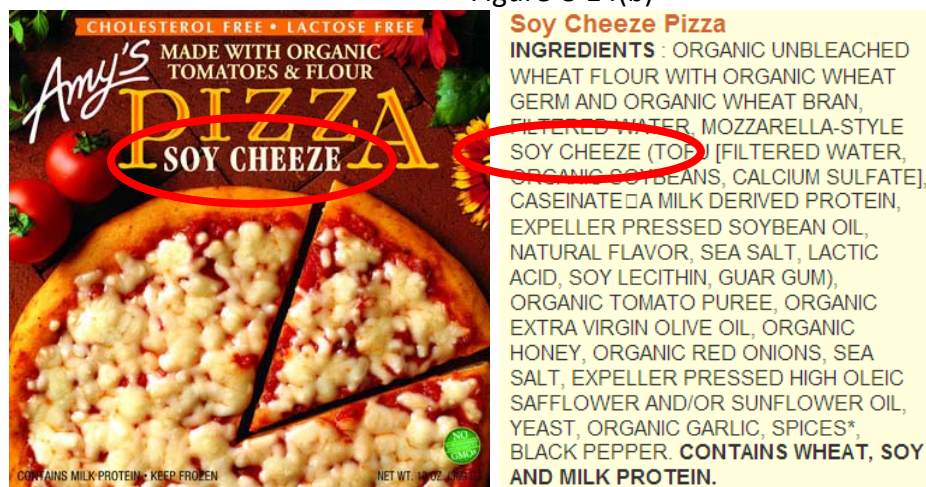


Figure C-14(a). Macaroni and Soy Cheeze Principal Display Panel and Ingredient Information.

Figure C-14(b). Soy Cheeze Pizza Principal Display Panel and Ingredient Information.

(Source: www.amyskitchen.com, accessed March 2010. For other misbranded and mislabeled products, see the website.)

Figure C-15. Elena's Food Specialties Products Containing Misbranded Dairy Analogs. Products are misbranded by use of standardized dairy foods in the name of the dairy product analog.

Figure C-15(a)



Figure C-15(a). Nate's Black Bean & Soy Cheese Taquitos.

(Source: www.elenasfoods.com, accessed March 2010.)

Figure C-16. Tofutti® Products Containing Misbranded Dairy Analogs.

Products are misbranded by use of standardized dairy foods in the name of the dairy product analog.

Figure C-16(a)



Figure C-16(b)



Figure C-16(a). Pizza Pizzaz with Milk Free Cheese.

Figure C-16(b). Mintz's Blintzes Pre-Baked Dairy Free Cheese Filled Crepes.

Figure C-16. Tofutti® Products Containing Misbranded Dairy Analogs (continued).

Products are misbranded by use of standardized dairy foods in the name of the dairy product analog.

Figure C-16(c)



Figure C-16(c). Mintz's Blintzes Pre-Baked Dairy Free Blueberry and Cheese Filled Crepes.

(Source: www.tofutti.com, accessed March 2010.)