

# Dairy Market Report

February 2007  
Volume 10, Number 2

by Roger Cryan

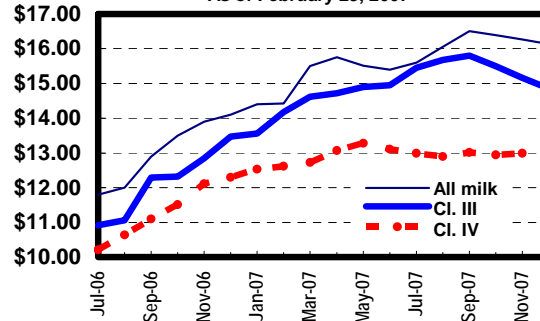
## ➤ General Summary:

- January's **Class III price** was up 9¢ from December to \$13.56. The **Class IV price** was up 23¢ to \$12.53.
- January **milk production** was estimated at 15.51 billion pounds in all 50 states, up 1.1% from 2006. December production was up 2.5% from a year ago.
- Total **cheese production** was up 3.8% from a year ago in December. As of February 23, blocks were \$1.37 per pound, up 3¢ from our last report; and barrels were \$1.35, up a half penny from the last report. January beginning cheese stocks were reported up 11% from a year ago.
- The **butter price** was up a penny to \$1.21 on February 23. Butter production was up 9½% from a year ago in December. Butter stocks at the start of January were reported up 24% from a year ago.

## ➤ Class & Component Prices

On December 29, USDA issued a final rule, providing for increased manufacturing cost allowances (also known as "make allowances") in Federal order milk price formulas, and announced its intention to apply these to February milk. In January, a group of producers sued USDA to stop them from applying these increased make allowances. USDA agreed to hold back from applying these to the advanced price announcement and so used the old make allowances in calculating their January 19 announcement of the February Class II skim milk price and the February Class I milk prices. This gave USDA time to prepare for arguments before a Federal district court judge on February 15. On February 22, the judge denied the motion to stop USDA from applying the new make allowances. As a result, these new make allowances were applied in the February 23 announcement of the March Class II skim and Class I prices. They will also be applied to the March 2 announcement of Class II butterfat, Class III, and Class

Projected Milk Prices, 2006 - 2007  
Based on Class III & Butter Futures Prices  
As of February 23, 2007



IV prices, and in subsequent price announcements.

The main result of these proceedings is that the February milk prices were split: Class I milk and Class II skim milk prices were calculated using the old make allowances, while the Class II butterfat and Class III and Class IV milk prices will be calculated with the new ones.

The [January Class III price](#) was announced at

\$13.56 per hundredweight, up 9¢ from December and up 17¢ from last January. The 9¢ increase breaks down as follows: down 25¢ with lower cheese prices, down 1¢ with lower butter prices, and up 36¢ with higher whey prices. **The February Class III price is projected to be about \$14.08, when announced on March 2, using the new make allowances.**

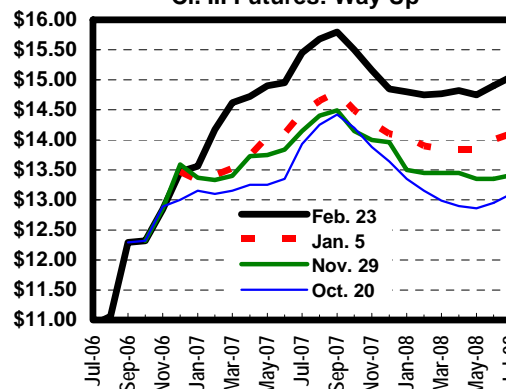
Class III [futures prices](#) for the next six months (March through August) averaged \$15.05 per hundredweight on February 23 (see chart). The futures market now projects the Class III price to average \$14.95 in 2007; USDA forecasts an average of \$13.55.

The Class III price is the minimum price processors pay for milk (with 3.5% butterfat) pooled on a Federal order and used to produce cheese.

The [January Class IV price](#) rose 23¢ to \$12.53 per hundredweight, up 40¢ from higher nonfat dry milk prices and down 16¢ from lower butter prices. This is up 33¢ from last December. **The February Class IV price projects to be about \$12.60, when announced on March 2, based on the new make allowances.**

Cash-settled butter [futures](#) prices and nonfat dry milk price expectations suggest that the Class IV price will average about \$13.00 for the next six months (March through August). USDA forecasts the Class IV price to average \$12.85 in 2007. The Class IV price is the minimum price processors pay for milk (also at 3.5% butterfat test) pooled on a Federal order and used to produce butter or milk powder.

Cl. III Futures: Way Up



Volume and open interest in the [Class III milk futures and options markets](#) (including electronic trading of the Class III contract) was 11.7 billion pounds of milk, as of February 21. Open interest in butter futures and options (including the electronic traded cash settled butter contract) represents the butterfat from another 1.85 billion pounds of Class IV milk. Dairy Market Report's Class IV projections are based on cash-settled butter futures prices.

[January component prices](#) were as follows: \$1.3009 per pound (down 5¢ from December) for butterfat in Class III, Class IV, and producer milk; \$2.4034 (down 3½¢) for protein in Class III and producer milk; \$0.9184 (up 4½¢) for total nonfat solids in Class IV milk; and \$0.3183 (up 6¢) for other solids in Class III and producer milk.

The [January Class II price](#) was up 30¢ to \$12.85 per hundredweight. **The February Class II price is projected to be about \$13.36, when announced on March 2, based on old make allowances in the skim price calculation and new make allowance in the butterfat calculation.** This is the minimum price for pooled milk used to make soft dairy products and in most food processing.

The [March Class I base price](#) was up 86¢ from February, and up \$1.76 from last year, to \$14.25. The [February Class I base price](#) was down 20¢ from January, and up 1¢ from last year, to \$13.39. **The February Class I base price was 25¢ higher than it would have been if the old make allowances had been applied on schedule.**

**The futures markets continue to project that the Class III (cheese price) formula will set the Class I price indefinitely.** The Class I base price plus the Class I location differential is the minimum price processors pay (at the plant) for milk pooled on a Federal order and bottled for beverage use.

## ➤ Producer Prices

USDA estimates January's all-milk price at \$14.40, up 30¢ from December, and down 10¢ from a year ago. **We project February's price to remain at about \$14.40, then rise to about \$15.40 in March. Based on futures prices, the next six months (March through August) are projected at about \$15.60; for all of 2007, futures project an all-milk price of \$15.65. The preliminary average for all of 2006 is \$12.93, nearly a dollar below the 6-year average.** USDA raised its 2007 all-milk price forecast again to \$14.70.

| MILC Payment Rate |              |              |
|-------------------|--------------|--------------|
| Year              | Class I Base | Payment Rate |
| FY 2007           |              |              |
| October '06       | 12.42        | 0.4318       |
| November          | 12.40        | 0.4386       |
| December          | 12.43        | 0.4284       |
| January '07       | 13.59        | 0.0340       |
| February          | 13.39        | 0.1020       |
| March             | 14.25        | 0.0000       |
| April*            | 14.63        | 0.0000       |
| May*              | 14.81        | 0.0000       |
| June*             | 14.98        | 0.0000       |
| July*             | 15.05        | 0.0000       |
| August*           | 15.48        | 0.0000       |
| September         | 15.77        | 0.0000       |

\* Months in *italics* are projections.  
Based on futures as of February 23, 2007.  
Rate for September 2007 is zero.

The table at left shows projected FY 2007 payment rates for the USDA's [MILC program](#). The projections are based on futures prices as of February 23, 2007. Thanks to higher product prices, the 24¢ reduction in formula for the Boston Class I price is not projected to trigger higher MILC payments through the end of the program. (Payments are triggered when the Class I base price is below \$13.69.)

## ➤ U.S. Milk Production

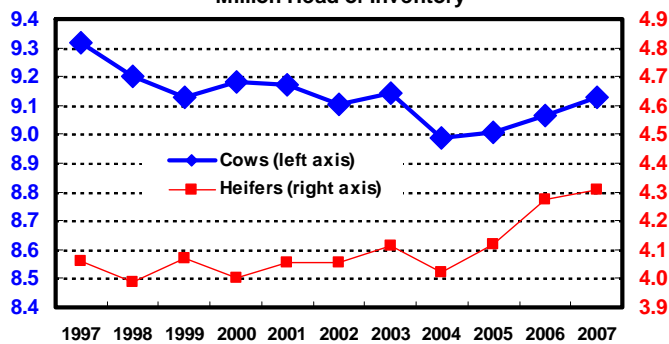
NASS estimated total January [U.S. milk production](#) at 15.50 billion pounds, up 1.1% from a year ago. **The herd and milk per cow were each up about 0.5%.**

December's production was 15.2 billion pounds, up 2.5%.

USDA reports monthly production for 23 states. Ten of these showed year-over-year growth in January, including Idaho (up 5.9%), Michigan (up 5.6%), and Minnesota (3.5%). Thirteen had lower production, including Missouri (-8.5%), Kansas (-6.5%), Florida (-5.0%), and **New Mexico** (-4.1%). California production was up 3.9%, on 3.0% higher milk per cow from 0.8% more cows, accounting for 24% of U.S. milk production in January. Wisconsin production was up 2.6%.

**Production growth in Midwestern states, along with drops in some Western states, reflect differences in how high feed prices affect producers. Many more Midwestern farmers grow their own feed, which serves as a hedge against high feed prices. Western producers are more likely to buy feed, leading to a greater response to rising feed costs.**

U.S. Dairy Cows & Heifers: Jan. 1, 1997-2007  
Million Head of Inventory



Source: USDANASS

**The chart above shows the U.S. inventories of cows and heifers over ten years. It is a picture that tells several stories.**

**First, it shows the trend of falling cow numbers through 2003, as growing milk per cow allowed more milk to be produced from fewer cows.**

Next, it shows the flatter heifer trend through 2003, as changing production practices have required more replacements per milking cow.

Finally, it shows an unusually persistent growth in both cow and heifer inventories since the beginning of 2004. In 2004, this countered a year of weak milk per cow; in 2005 and 2006, it supported unusually strong demand-driven milk growth.

The modest growth in heifer numbers since a year ago probably represents a peak, which has produced the highest dairy heifer to milk cow ratio (47%) in U.S. history.

Dairy cow slaughter numbers through February 10 are running above last year, but well below recent averages. (See graph on page 6.) Slaughter is likely to accelerate in 2007 for several reasons, including readily available replacement heifers and the economic stress of high feed costs on many producers.

In addition, the private CWT herd-retirement program is expected to have a substantial impact on slaughter numbers this spring. Farmer bids to participate in the program are due March 3 and the process of retiring chosen herds will begin March 19. This program has removed nearly 150,000 milk cows in three previous rounds.

Another impact of the large heifer inventory is likely to be continued underlying growth in milk per cow, as accelerated culling replacement leads to accelerated selection of high producers.

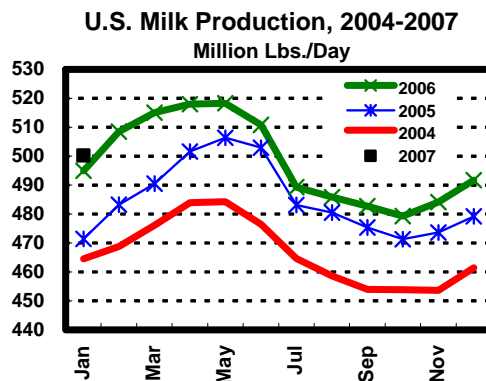
NASS estimates that there were, on average, 61,990 licensed dairy herds in 2006, 2550 fewer than in 2005. NASS also estimates that in 2006, for the first time, over 50% (51.6%) of U.S. milk production came from herds of more than 500 head.

USDA's has raised its projection for 2007 growth, to 1.4%. We project a range of 1% to 2%.

## ➔ Cheese

CME cheddar cheese prices were down. As of February 23, forty-pound blocks were up 3¢ from our last report, to \$1.37 per pound. Five hundred-pound barrels were up ½¢ from last month's report to \$1.35.

For the month of January, the average price for cheddar in 40-lb. blocks was \$1.32, down 1½¢ from December and down ½¢ from last January. The average CME price for cheddar cheese in 500-lb.



barrels was \$1.33 per pound, up 4½¢ from December and up 3¢ from last January.

The Class III futures market currently projects the equivalent of an average cheese price for 2007 near \$1.45. World prices for cheddar cheese are about \$1.35 per pound.

In December, total U.S. cheese production (excluding cottage cheese) was 829 million pounds, up 4% from a year ago, and up 5% from November.

Production of American type cheese totaled 340 million pounds, up 3% from a year ago, and up 8% from November. Production of Italian types was 352 million pounds, up 5% from a year ago, and up 8% from November.

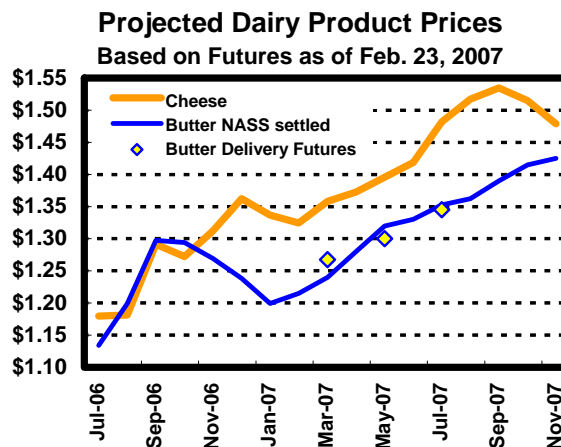
For all of 2006, total cheese production was up 3.6% to 9.46 billion pounds, production of American types was up 3.3% to 3.94 billion pounds, and Italian types were up 4.1% to 3.96 billion pounds, (more than American types for the first time).

USDA/NASS estimated natural American cheese stocks at 556 million pounds at the beginning of February, up 3% from January and up 4% from a year ago. Stocks of other cheese, including Swiss, began February at 290 million pounds, up 2% from last month and up 30% from last year. These are the new expanded storage numbers, resulting from mandatory reporting and for which NASS now has a full year of data to compare year over year. The new numbers for all of 2006 are available in NASS' Cold Storage annual report.

USDA's Economic Research Service estimates that commercial disappearance of American cheese in the three months ending November 2006 was 1.04 billion pounds, up 4% from a year ago. For other cheese it was 1.53 billion pounds, also up 4% from last year. Three-month commercial disappearance of all cheese was up (you guessed it) 4%. For the year ending with

November, commercial disappearance of all cheese was up 3.0%.

The average retail price for cheddar cheese in U.S. cities was \$4.06 per pound in January 2006, down 38¢ from a year ago and up 4¢ from December. The average retail price for American processed cheese was \$3.77 per pound, down 14¢ from a year ago and up 17¢ from November.



## ➤ Butter

[December 2006 U.S. butter production](#) totaled 138 million pounds, up 9½% from a year earlier, and up 17% from November. **For all of 2006, butter production was 1.44 billion pounds, up 7.2% from 2005.**

NASS estimates that February's starting [butter stocks](#) were 155 million pounds, up 43% from a month earlier and up 24% from a year ago. **These are the new expanded storage numbers, resulting from mandatory reporting and for which NASS now has a full year of data to compare year over year. The new numbers for all of 2006 are available in NASS' [Cold Storage](#) annual report.**

USDA's Economic Research Service estimates that [commercial disappearance](#) of butter in the three months ending with November was 369 million pounds, down 11½% from a year ago.

The CME butter price was up a penny to \$1.21 on February 23. The [CME butter price](#) averaged \$1.22½ per pound during January, down 1½¢ from December, and down 11¢ from a year ago. **The futures markets expect butter prices to average about \$1.33 in 2007. World butter prices are rising and are now about 90¢ per pound.**

The average [retail butter price](#) for U.S. cities was \$3.00 per pound in January, down 13¢ from a year ago and up 11¢ from December.

## ➤ Nonfat Dry Milk

NASS' estimate of [U.S. nonfat dry milk production](#) was 115 million pounds in December, up 11% from a year ago and up 43% from November. Adding 15 million pounds of modified "skim milk powders" made in December, total skim powder production was 130 million pounds, down 1% from a year ago and up 24% from November. **The shift in production from protein-standardized "skim milk powders" to nonfat dry milk seems to be related to falling exports of "skim milk powders." (See below.)**

USDA's Commodity Credit Corporation held small stocks of [nonfat dry milk](#), all committed to domestic and foreign feeding programs. Manufacturers' January 1 stocks of nonfat dry milk (per se) were 80 million pounds, down 30% from a year ago, but up 93% from December 1.

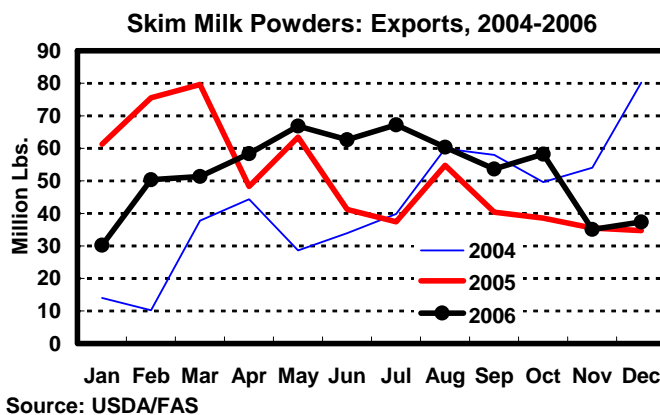
[The CME prices of extra grade and grade A nonfat dry milk](#) were \$1.45 and \$1.52½ on February 23, unchanged and down 2½¢, respectively, from last month's report. According to USDA's weekly [survey](#), the average U.S. manufacturers' price was \$1.10 the week of February 17. **Changes in formula pricing of powder have allowed for some modest increases in the NASS price, but have yet to close the large gap between average sale and spot prices.**

**Overseas powder prices are approaching \$1.50 per pound in a tight world market, but U.S. [exports](#) of skim milk powder may be faltering, as a equally tight domestic supplies make it hard for U.S.**

**processors to serve overseas customers. Traders say that overseas customers are more willing to accept nonfat dry milk, as markets around the world are very tight, but exports in November and December were still well down from earlier months. (See graph.) In December 37.4 million pounds were shipped out, slightly above 2005, but less than half of the record figure of December 2004.**

**Nevertheless, for all of 2006, skim milk powder exports were a record 632 million pounds, equal to 3.9% of U.S. skim milk production. All together, exports of skim powder, dry whey, and whey protein concentrates totaled 1.29 billion pounds, equal to 7.9% of U.S. skim solids production.**

USDA's Economic Research Service estimates that [commercial disappearance](#) (which includes exports) of nonfat dry milk (only) in the three months ending November was 232 million pounds, down 17% from a year ago. (Production in the same months was off by 7%.)



## ➤ Yogurt & Whey

[U.S. yogurt production](#) was 247 million pounds in December, up 9% from a year ago and up 7% from November. **Yogurt production is generally taken as the best available measure of yogurt sales, since it is a perishable product with limited imports and exports. For all of 2006, yogurt production was 3.1 billion pounds, up 4.1% from 2005.**

**On March 19, CME will begin trading a cash-settled dry whey futures [contract](#) on their electronic trading platform. It will be settled at the end of the month against the same monthly average NASS survey whey price used to calculate Federal order Class III prices. The initial contract months will be through March 2008.**

[U.S. production of dry whey](#) for human consumption was 87 million pounds in December, up 8% from a year ago, and also up 8% from November. Manufacturers' stocks at the start of January were 34 million pounds, down 7½% from last year, and up 11% from the beginning of December. December production of whey protein concentrates (for human and animal use) with 25% to 50% protein was 23 million pounds, down 6½% from a year ago, and up 3% from November.

December production of whey protein concentrates from 50% to 90% protein was 11 million pounds, up 14% from a year ago, and up 7% from November. December production of whey protein isolates (over 90% protein) was 3.4 million pounds, up 27% from a year earlier, and up 4% from November.

The manufacturers' [price of whey](#) was 61¢ per pound the week of February 17, according to NASS' survey. *Rising powder prices continue to drive rising WPC-34 spot prices, to a reported \$1.22 per pound, according to USDA's Dairy Market News. The international whey price is approaching 70¢ per pound, and international WPC-34 prices are also above \$1.20. These unprecedented whey values are a product of several factors, including a very tight international skim solids market, the apparently limited present capacity to process the whey stream from cheese production, and a growing awareness of whey products' absolute functional advantages over skim milk powders for some uses, and their ability to fill in on the basis of price for others.*

### ➤ Ice Cream

[U.S. ice cream production](#) was 73 million gallons in December, down 6% from a year ago and down 9% from November. December ice cream mix production was 27 million gallons, down 10% from a year earlier, and down 15% from November.

January's average [retail ice cream price](#) for U.S. cities was \$4.03 per ½-gallon, up 13¢ from December, and up 33¢ from a year ago.

### ➤ Fluid Milk

[Fluid milk sales](#) for November were reported up 1.4% from a year ago, and up 1.8% after USDA adjustments for calendar composition. For December, they were down 0.2%, or up 2.4%, adjusted for calendar composition. *For all of 2006, fluid sales were up 1.0% to 55.1 billion pounds, and up 1.2% if adjusting for calendar composition. (See table on page 6.)*

The [announced cooperative Class I milk price](#) for major cities averaged \$17.79 per hundredweight (\$1.53 per gallon) in February, \$1.87 (16¢) above the Federal order minimum, 19¢ (2¢) higher than a year ago, and 18¢ (2¢) higher than January.

The [U.S. average city retail price](#) for whole milk was \$3.07 per gallon in January, up 6¢ from November, and down 13¢ from last year.

### ➤ Market Outlook

*January milk production growth was the smallest one-year increase (1.07%) since February 2005, but the two-year increase (6.1%) is in line with recent numbers and the three-year growth (7.7%) is one of the highest of the decade. As discussed above, despite poor margins between feed and milk prices, it is not clear that production will slow in 2007 (aside from the impacts of the fourth round of CWT herd retirements, whose results will be known in a few weeks).*

*Remarkably tight markets for skim solids continue to drive overseas demand, and exports are constrained primarily by domestic supply. Butterfat prices remain the biggest question mark for 2007; aside from (very substantial) CWT-assisted exports of butter and anhydrous milkfat, the U.S. market is dependent on U.S. demand to maintain prices that are still some 30¢ above world levels.*

*Commercial disappearance of skim solids was up 1.0%, and milk fat up 1.9% in the quarter ending in November, according to USDA. These include both exports and improved fluid milk demand. Fundamentals are strong for skim solids, although high spot prices are not necessarily translating into milk prices. Though butterfat has even stronger domestic demand numbers, butterfat prices probably have limited upside potential in the medium term.*

*We continue to watch for movement in the cheese and butterfat prices. However, the key numbers to watch this spring may be corn spot and futures prices: if the ethanol-driven spike in corn prices persists through the 2007 growing season, and large feed-buying farms continue to feel the stress they've felt, unprecedented farm failures could cut the milking herd substantially. This could lead to lower production than we've projected and drive dairy prices even higher than the futures markets now project.*

*This report is produced for [Dairy Management Inc.](#), by [National Milk Producers Federation](#). Please direct questions, comments, and subscription requests to [Roger Cryan \(rcryan@nmpf.org\)](mailto:rcryan@nmpf.org)*

**Estimated Total U.S. Sales of Fluid Milk Products:  
November and Year to Date, and Percent Change from Previous Year 1/**

| Product                       | November 2006 |            | December 2006 |             | 2006 Total    |            |
|-------------------------------|---------------|------------|---------------|-------------|---------------|------------|
|                               | Mil. Lbs.     | %          | Mil. Lbs.     | %           | Mil. Lbs.     | %          |
| Whole Milk                    | 1,366         | -2.7       | 1,424         | -3.7        | 16,491        | -2.3       |
| Flavored Whole Milk           | 61            | -9.5       | 59            | -9.2        | 713           | -5.1       |
| <b>Organic Whole Milk</b>     | <b>22</b>     | <b>n/a</b> | <b>22</b>     | <b>n/a</b>  | <b>244</b>    | <b>n/a</b> |
| Reduced Fat Milk (2%)         | 1,490         | 2.5        | 1,523         | 0.7         | 17,813        | 2.6        |
| Low Fat Milk (1%)             | 543           | 6.1        | 541           | 3.5         | 6,390         | 3.3        |
| Fat-Free Milk (Skim)          | 665           | 3.3        | 674           | 1.6         | 8,030         | 2.6        |
| Flavored Fat-Reduced          | 353           | 4.1        | 294           | 5.1         | 3,728         | 2.3        |
| <b>Organic Fat-Reduced</b>    | <b>75</b>     | <b>n/a</b> | <b>74</b>     | <b>n/a</b>  | <b>818</b>    | <b>n/a</b> |
| Buttermilk                    | 48            | -3.2       | 47            | -0.7        | 521           | -1.1       |
| <b>Total 2/</b>               | <b>4,689</b>  | <b>1.4</b> | <b>4,736</b>  | <b>-0.2</b> | <b>55,064</b> | <b>1.0</b> |
| <b>Total - adjusted 2/ 3/</b> | <b>4,699</b>  | <b>1.8</b> | <b>4,788</b>  | <b>2.4</b>  | <b>55,177</b> | <b>1.2</b> |

**Source:** Monthly summaries of *Federal Milk Order Market Statistics*, AMS/USDA, and *California Dairy Information Bulletin*, California Department of Food and Agriculture.

Adapted from *Dairy Market News*, AMS/USDA, January 12 & February 9, 2007. Organic milk is included in with conventional milk in calculating percentage changes.

1/ Estimates for the U.S. based on federal order and California data.

2/ Includes misc. products

3/ Adjusted for calendar composition.

n/a = "not available"

**On-line Sources** Much of the information for this report is from the World Wide Web. To make the most up-to-date numbers available to you, the text above contains hyperlinks to some of the following sites:

**Dairy Market Report Archive:**

<http://www.nmpf.org/meData/dairyMarket.cfm>

**U.S. Dairy Markets and Outlook Archive:**

[www.nmpf.org/meData/outlook.cfm](http://www.nmpf.org/meData/outlook.cfm)

**USDA's National Agricultural Statistics Service:**

Milk production:

[usda.mannlib.cornell.edu/reports/nassr/dairy/pmp-bb/](http://usda.mannlib.cornell.edu/reports/nassr/dairy/pmp-bb/)

Dairy product production:

[usda.mannlib.cornell.edu/reports/nassr/dairy/pdp-bb/](http://usda.mannlib.cornell.edu/reports/nassr/dairy/pdp-bb/)

Dairy product inventories:

<http://usda.mannlib.cornell.edu/MannUsda/viewDocumentInfo.do?documentID=1034>

Dairy product prices:

<http://usda.mannlib.cornell.edu/MannUsda/viewDocumentInfo.do?documentID=1450>

U.S. and Canadian cattle:

[usda.mannlib.cornell.edu/reports/nassr/livestock/uscc/](http://usda.mannlib.cornell.edu/reports/nassr/livestock/uscc/)

U.S. livestock operations:

<http://usda.mannlib.cornell.edu/reports/nassr/other/zfl-bb/>

**USDA's AMS Dairy Programs, Fed. Order Prices:**

Class I:

<http://www.ams.usda.gov/dyfmos/mib/advanprc.pdf>

Others:

<http://www.ams.usda.gov/dyfmos/mib/classprcacnmt.pdf>

Historical Class Prices:

[http://www.ams.usda.gov/dyfmos/mib/nass\\_fedord\\_prc.htm](http://www.ams.usda.gov/dyfmos/mib/nass_fedord_prc.htm)

Federal order formulas:

[www.ams.usda.gov/dyfmos/mib/price\\_form\\_2003.htm](http://www.ams.usda.gov/dyfmos/mib/price_form_2003.htm)

**AMS Dairy Market News:** Fluid sales, coop. Class I

prices: [www.ams.usda.gov/dairy/mncs/weekly.htm](http://www.ams.usda.gov/dairy/mncs/weekly.htm)

**USDA's Economic Research Service:**

Commercial disappearance, price projections, etc.:

[usda.mannlib.cornell.edu/reports/erssor/livestock/ldp-mbb/](http://usda.mannlib.cornell.edu/reports/erssor/livestock/ldp-mbb/)

**USDA's Farm Service Agency:**

Information on the MILC program:

<http://www.fsa.usda.gov/pas/publications/facts/html/milc06.htm>

Information on the price support program:

Notices to the industry:

<http://www.fsa.usda.gov/daco/notices.htm>

Announcements, invitations, etc.:

<http://www.fsa.usda.gov/daco/dairy.htm#Inv>

Inventory reports and statistics:

<http://www.fsa.usda.gov/daco/reports.htm>

**USDA's Foreign Agricultural Service:**

Dairy trade data:

<http://www.fas.usda.gov/dlp/Dairy>

**Bureau of Labor Statistics:** Retail prices: [www.bls.gov/](http://www.bls.gov/)

or paste the following codes:

APU0000709112 for whole milk;

APU0000710111 for butter;

APU0000710211 for processed cheese;

APU0000710212 for cheddar cheese; and

APU0000710411 for ice cream

into this page: <http://146.142.4.24/cgi-bin/srgate>

**Federal Register:** Formal notice of regulatory actions:

<http://www.gpoaccess.gov/fr/index.html>

**Chicago Mercantile Exchange Daily Prices:**

Cash cheese & butter prices; milk & butter futures:

[www.cme.com/dta/hist/daily\\_settlement\\_prices.html?type=com](http://www.cme.com/dta/hist/daily_settlement_prices.html?type=com)

Daily Dairy Report: [www.dailydairyreport.com/](http://www.dailydairyreport.com/)

For more information on cash-settled butter futures:

[www.cme.com/trading/prd/overview\\_CB14731.html](http://www.cme.com/trading/prd/overview_CB14731.html)

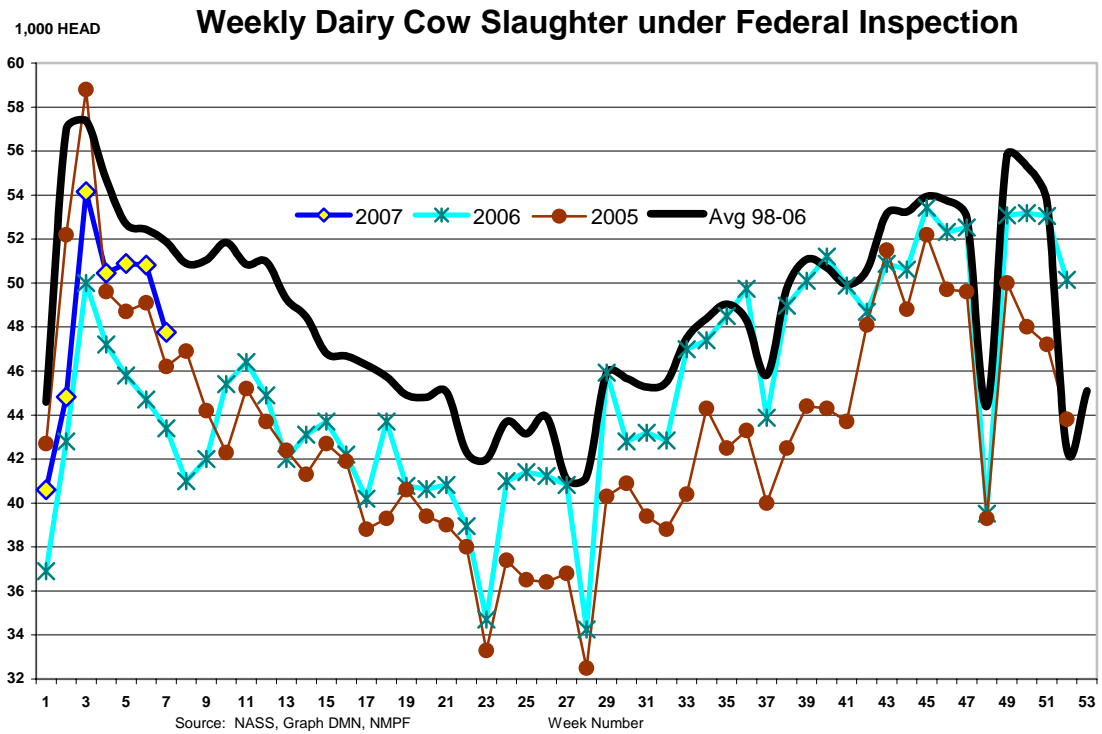
**This report is produced for:**

Dairy Management, Inc., [www.dairyinfo.com](http://www.dairyinfo.com)

**This report is produced by:**

National Milk Producers Federation, [www.nmpf.org](http://www.nmpf.org).

Contact: [rcryan@nmpf.org](mailto:rcryan@nmpf.org)



Thanks to George Koerner of the Dairy Market News Service for this format.  
 Federally inspected slaughter through February 17, 2006.  
 The "98-05 Avg." series was added by *Dairy Market Report*.